

**NATIONAL HIGHWAY AUTHORITY
KOHALA-MUZAFFARABAD ROAD (S-2)
SLOPE STABILITY MEASURES AT KM-12+150**



NATIONAL HIGHWAY AUTHORITY
27 - Mouve Area, G-9/1,
Islamabad.

PROJECT

**SLOPE PROTECTION MEASURES
ALONG KM 12+150 ON
KOHALA-MUZAFFARABAD ROAD
(S-2)**

DESIGN

NHA HQ, Islamabad



TITLE

TITLE

DRG NO.

DATE

MAY, 2018

SCALE

N.T.S



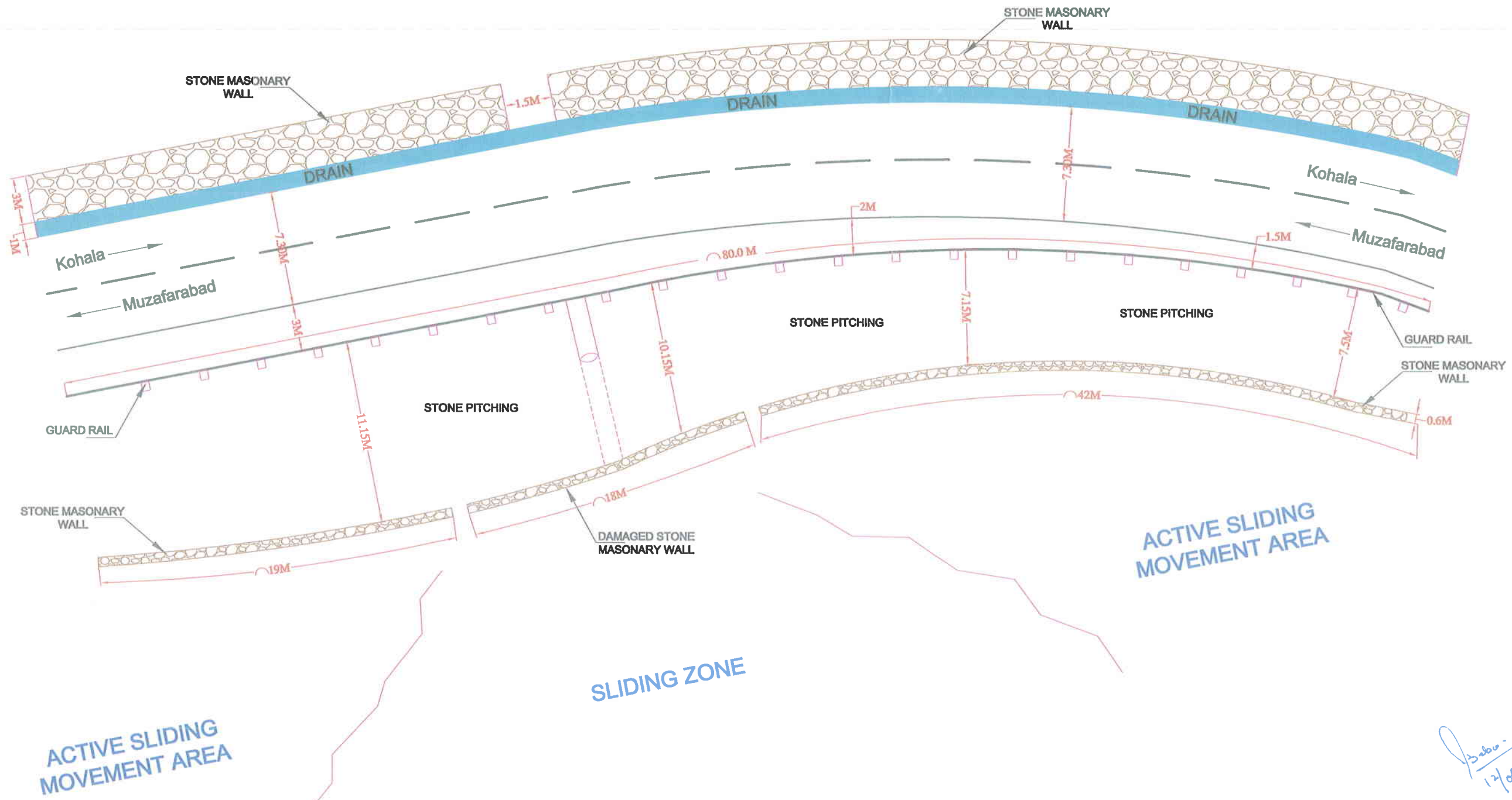
NATIONAL HIGHWAY AUTHORITY
27 - Mouve Area, G-9/1,
Islamabad.

PROJECT

SLOPE PROTECTION MEASURES
ALONG KM 12+150 ON
KOHALA-MUZAFFARABAD ROAD
(S-2)

DESIGN

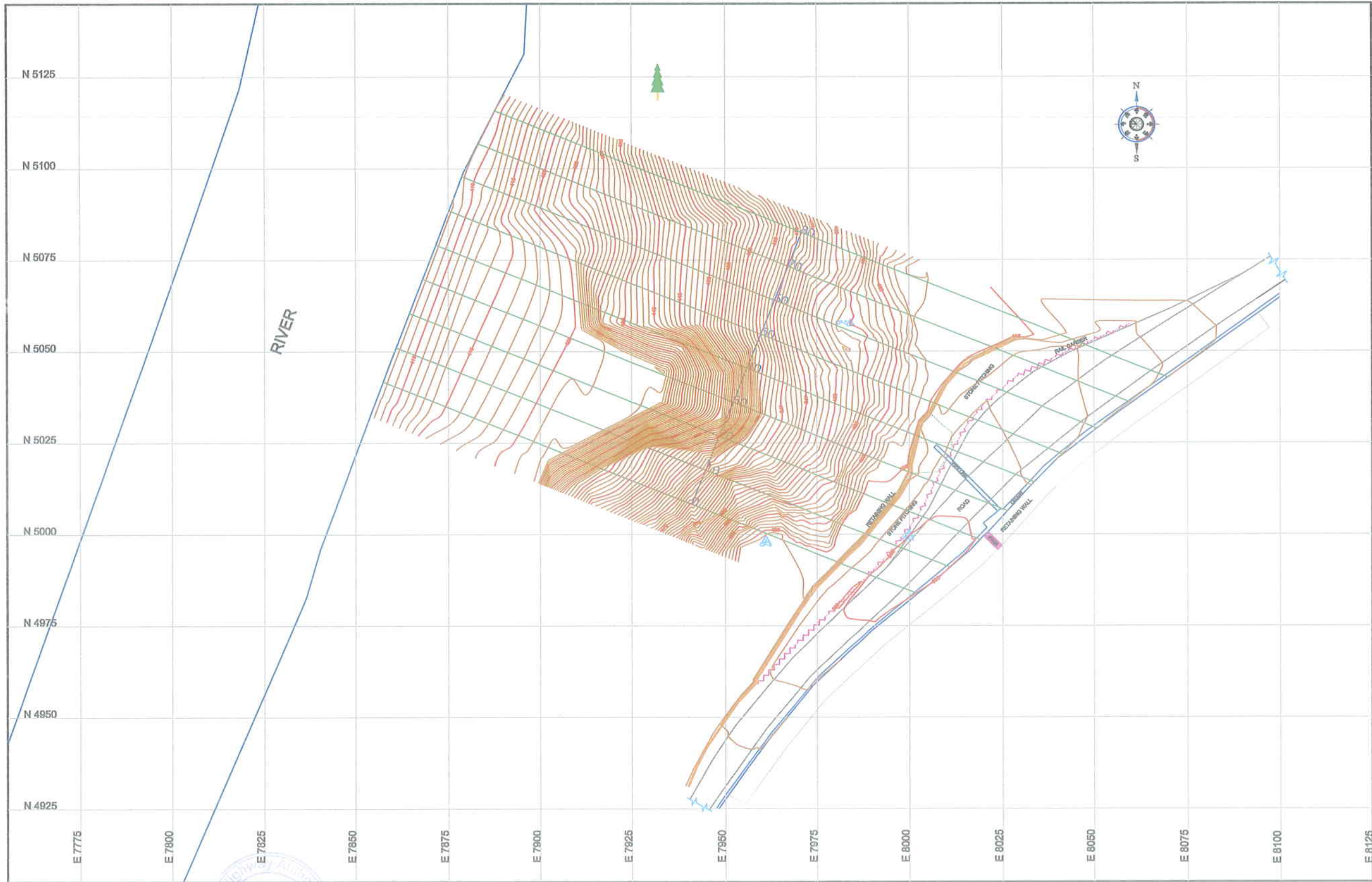
NHA HQ, Islamabad



EXISTING LAYOUT PLAN

S. Sabir
12/06/18

TITLE	LAYOUT OUT THE ROAD
DRG. NO	1
DATE	JUNE, 2018
SCALE	



NATIONAL HIGHWAY AUTHORITY
27 - Mouve Area, G-9/1,
Islamabad.

PROJECT
**SLOPE PROTECTION MEASURES
ALONG KM 12+150 ON
KOHALA-MUZAFFARABAD ROAD
(S-2)**

DESIGN
NHA HQ, Islamabad



TITLE
TOPOGRAPHIC SHEET

DRG NO
2

DATE
JUNE, 2018

SCALE
1:1000



NATIONAL HIGHWAY AUTHORITY
27 - Mouve Area, G-9/1,
Islamabad.

PROJECT
SLOPE PROTECTION MEASURES
ALONG KM 12+150 ON
KOHALA-MUZAFFARABAD ROAD
(S-2)

DESIGN
NHA HQ, Islamabad

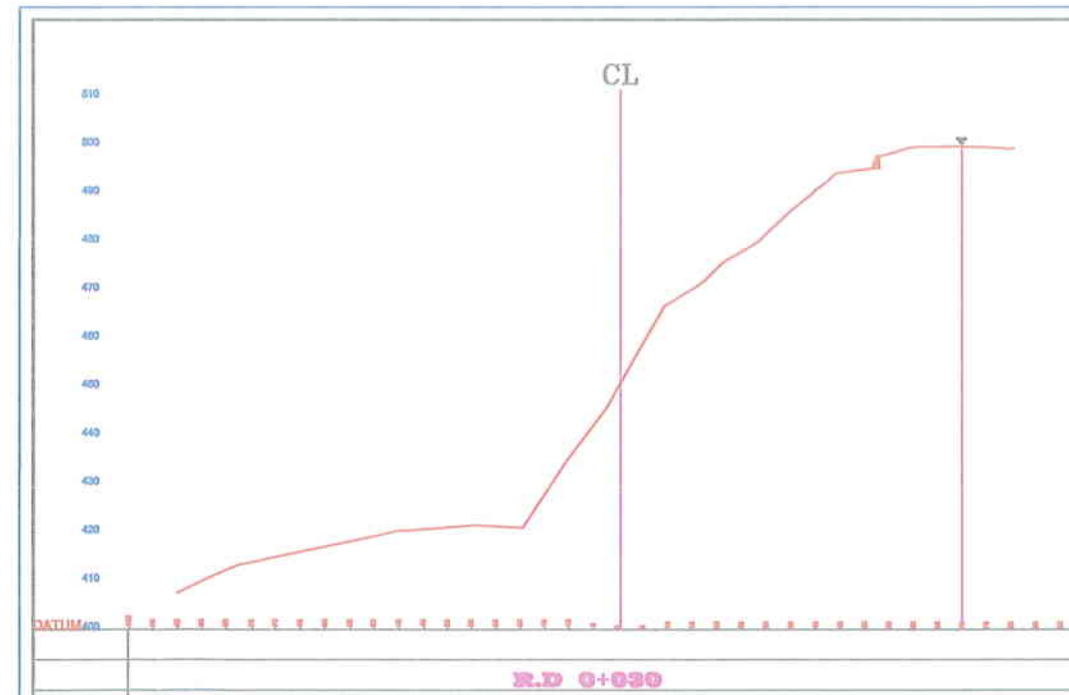
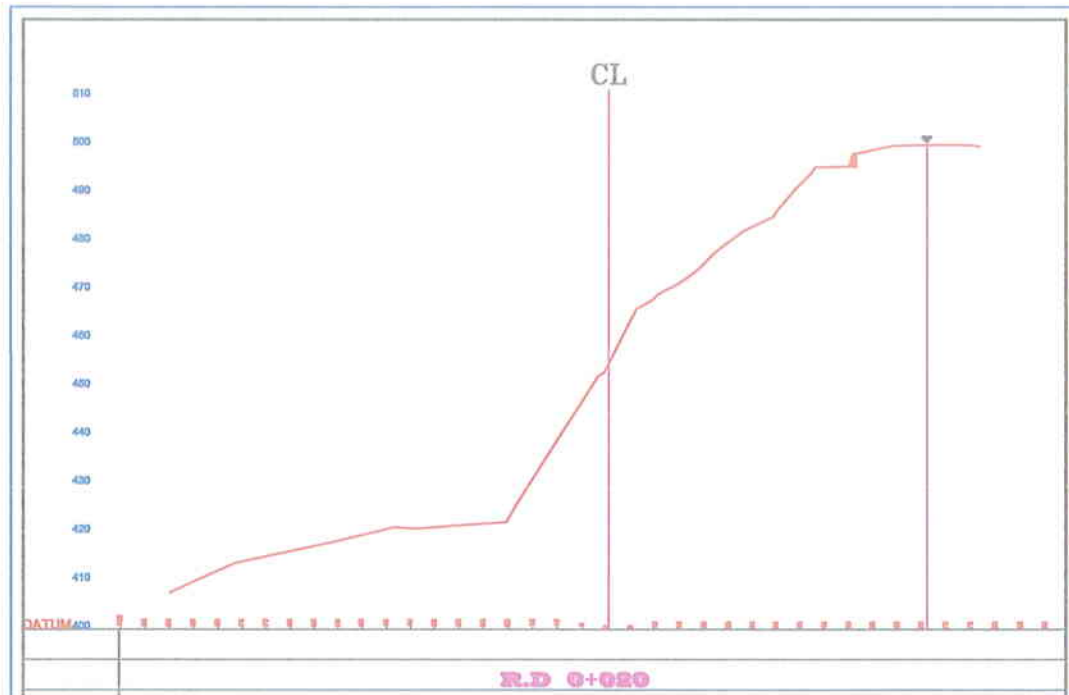
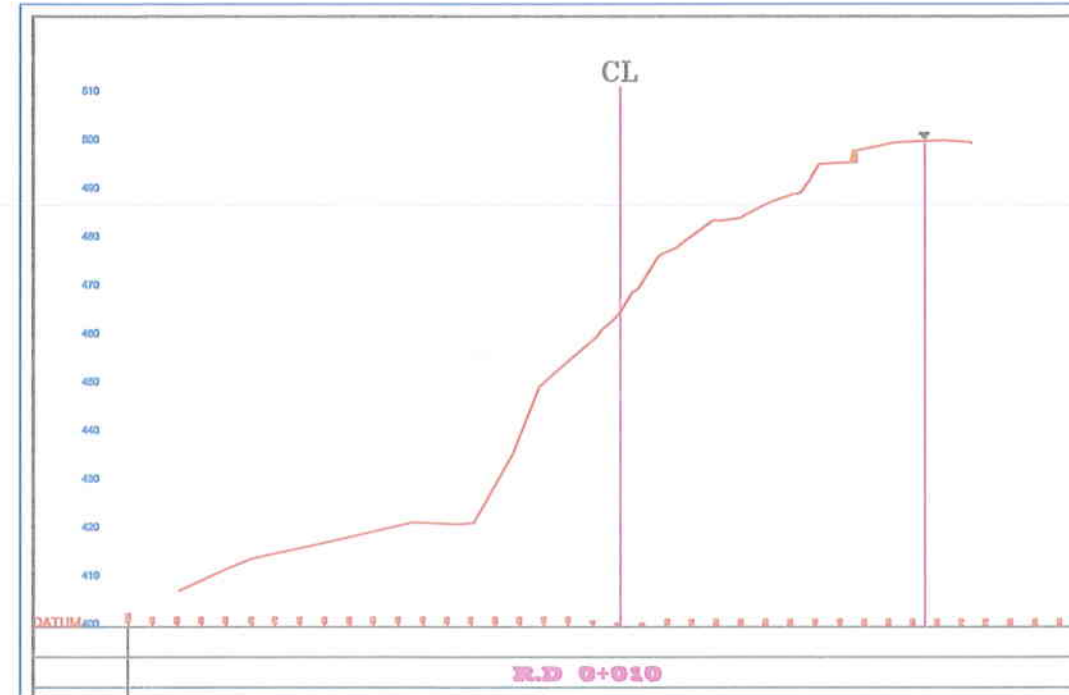
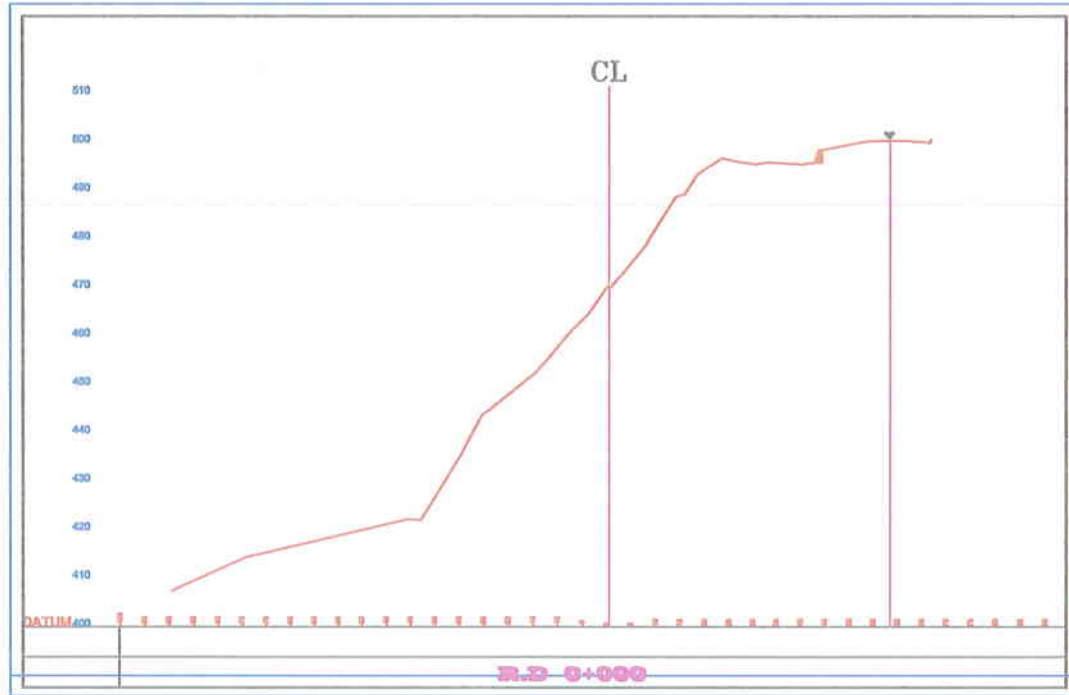


TITLE
CROSS SECTIONS

DRG NO
3

DATE
JUNE, 2018

SCALE

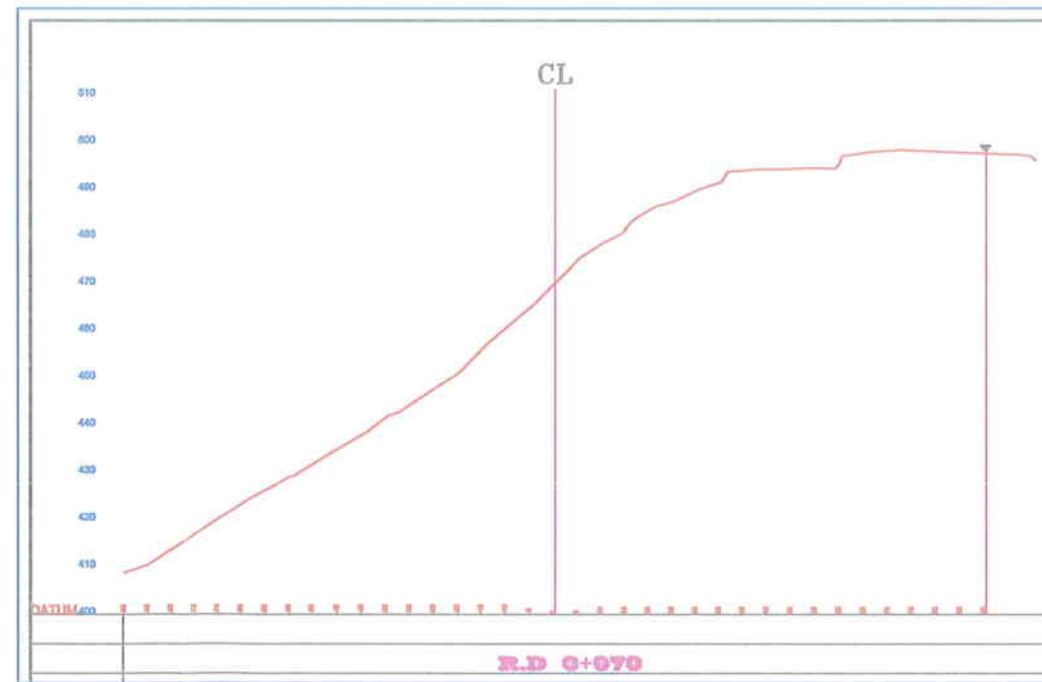
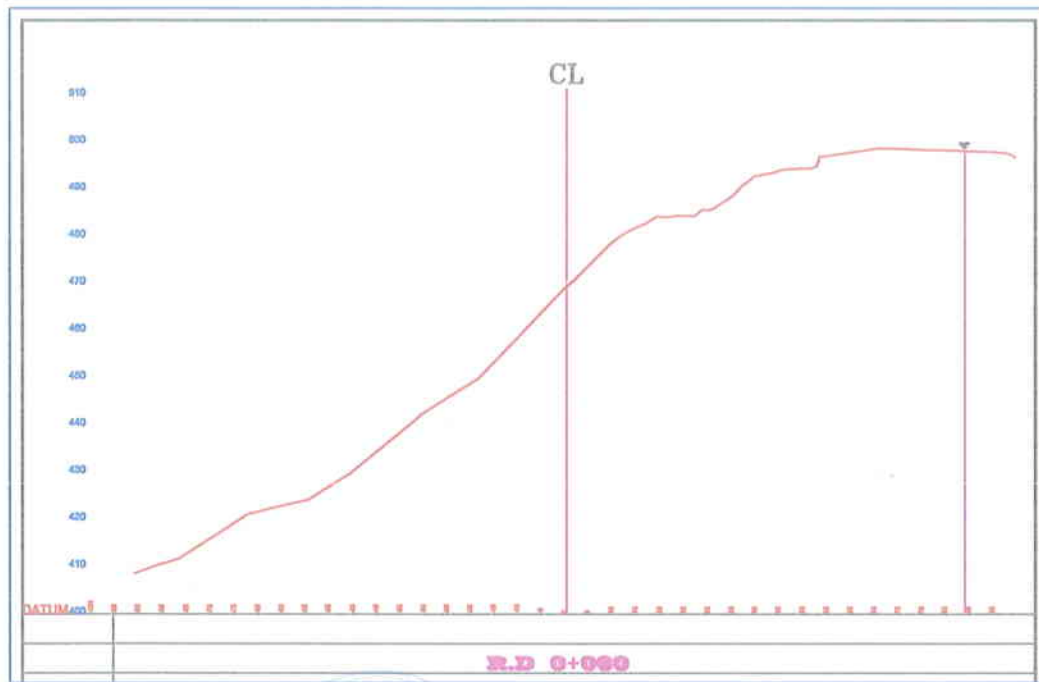
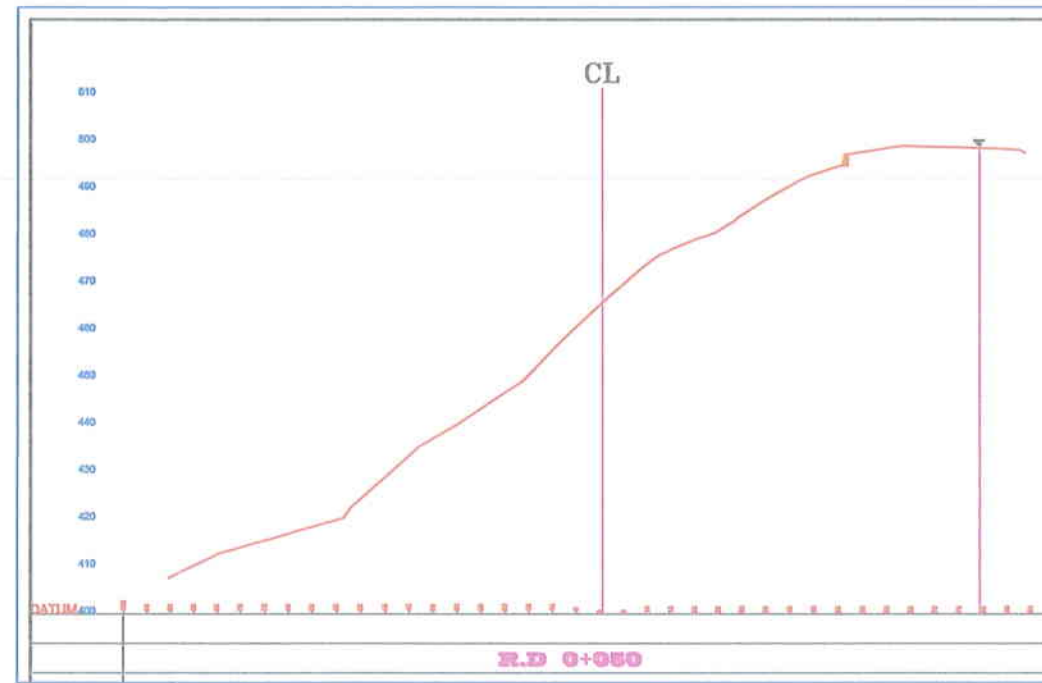
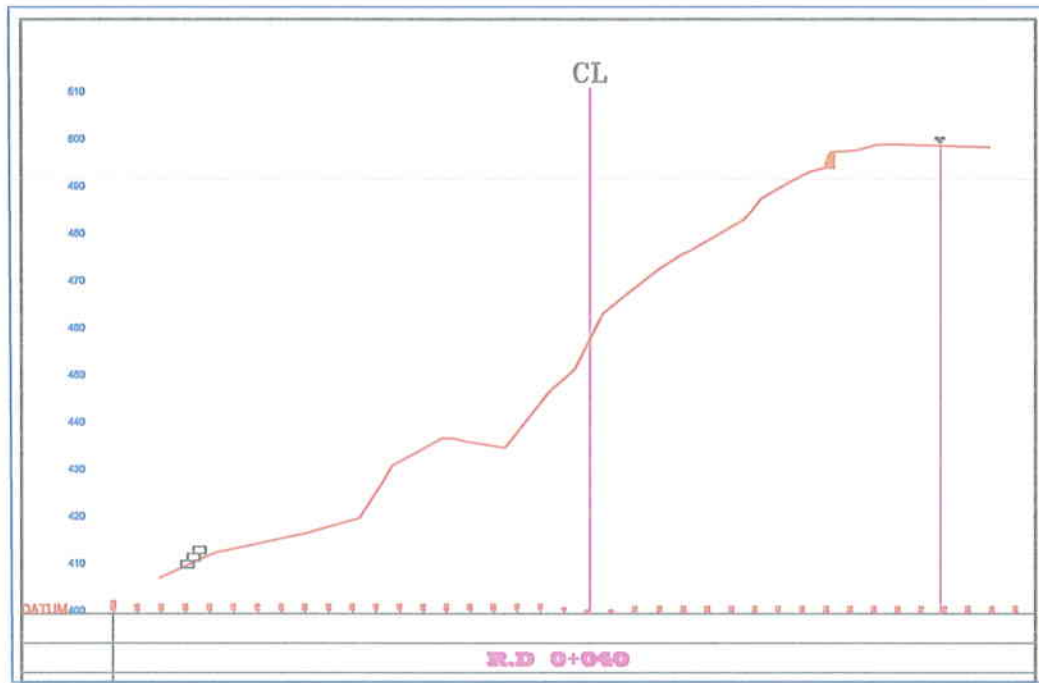




NATIONAL HIGHWAY AUTHORITY
27 - Mouve Area, G-9/1,
Islamabad.

PROJECT
SLOPE PROTECTION MEASURES
ALONG KM 12+150 ON
KOHALA-MUZAFFARABAD ROAD
(S-2)

DESIGN
NHA HQ, Islamabad



TITLE
CROSS SECTIONS

DRG. NO
4

DATE
JUNE, 2018

SCALE