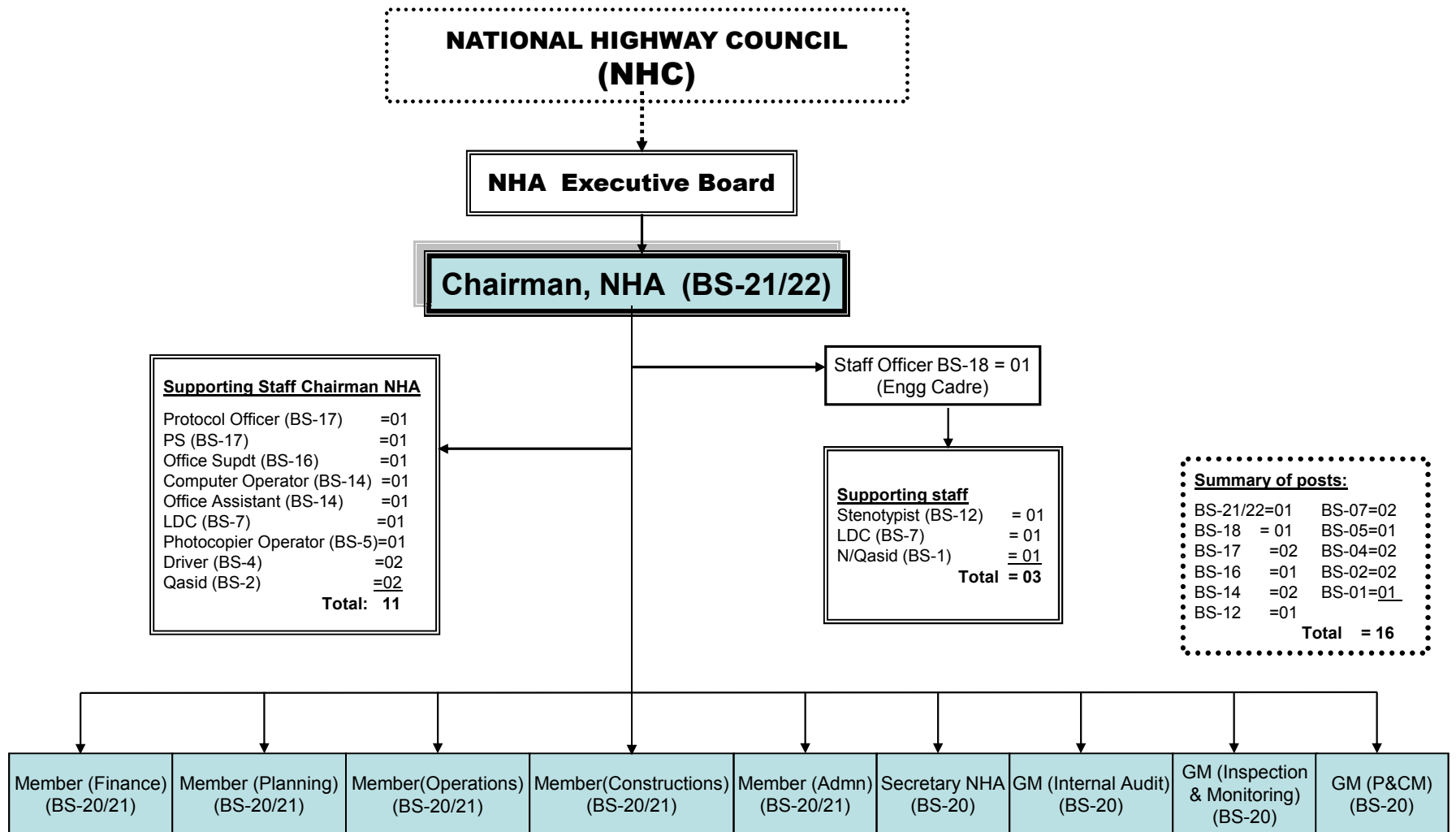


NATIONAL HIGHWAY AUTHORITY

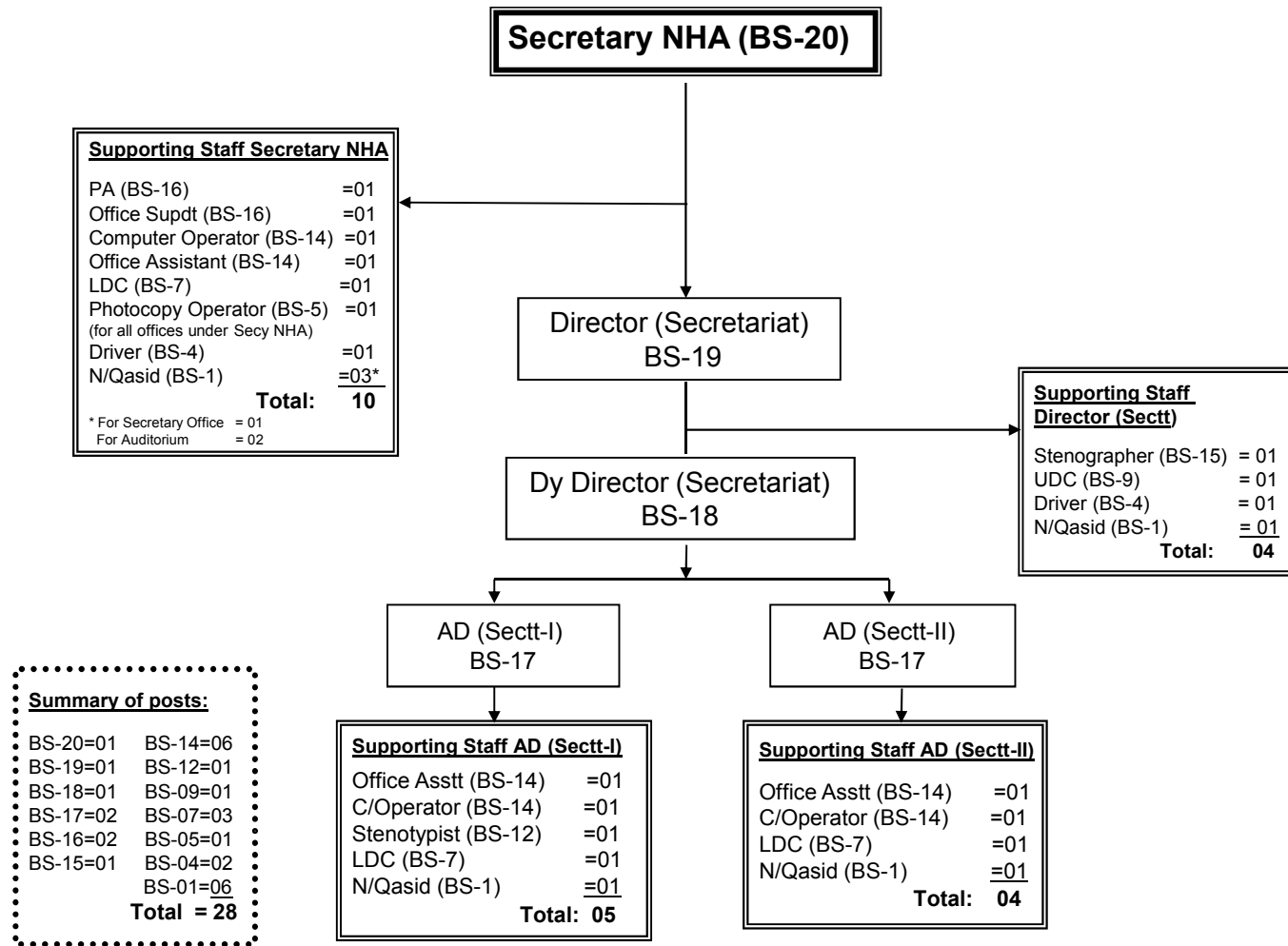
**Revised Organogram 2011 of NHA**

**NATIONAL HIGHWAY AUTHORITY**  
**Organization chart of the office of Chairman, NHA**



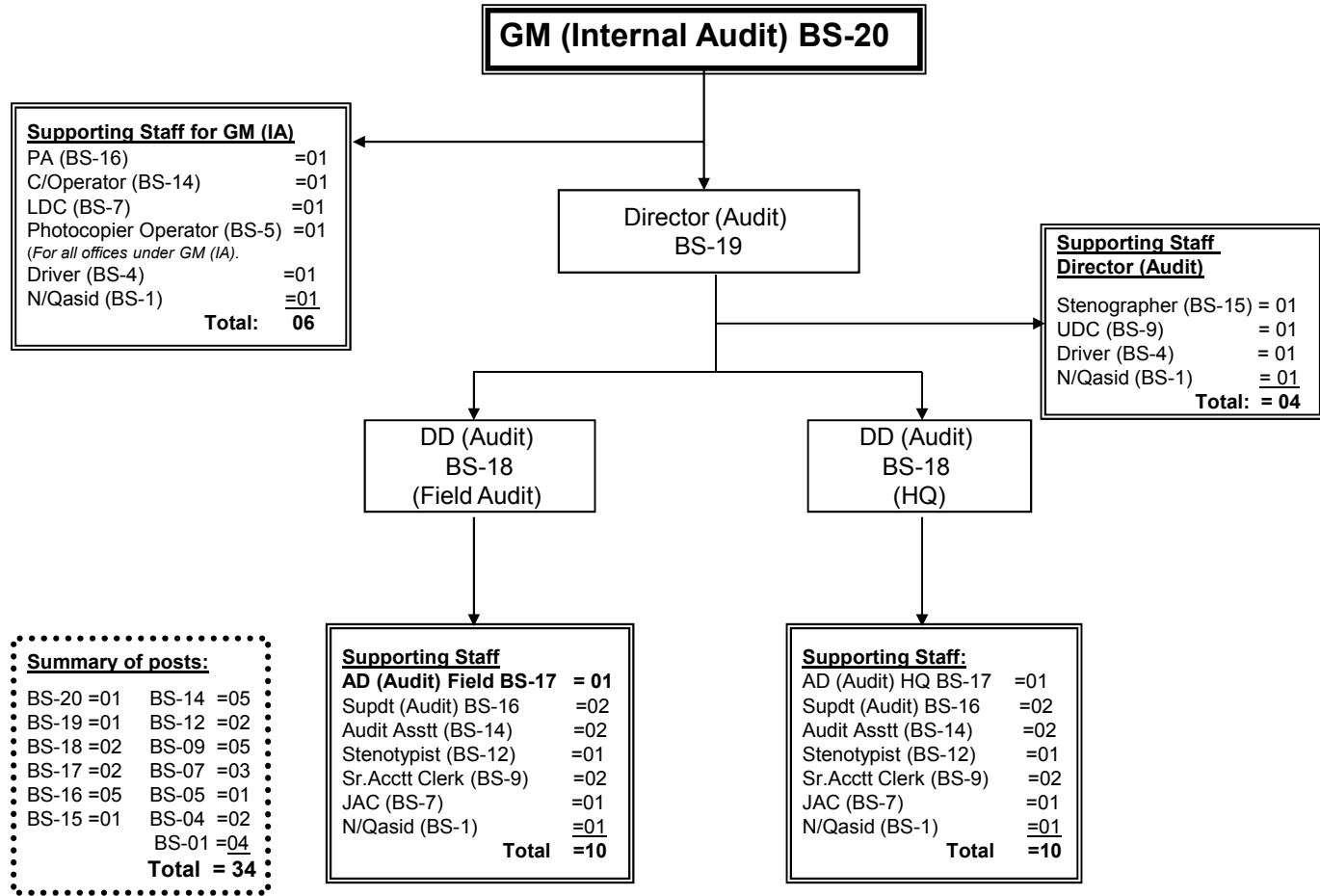
**NATIONAL HIGHWAY AUTHORITY**

**Organization chart of the office of Secretary, NHA under Chairman, NHA**



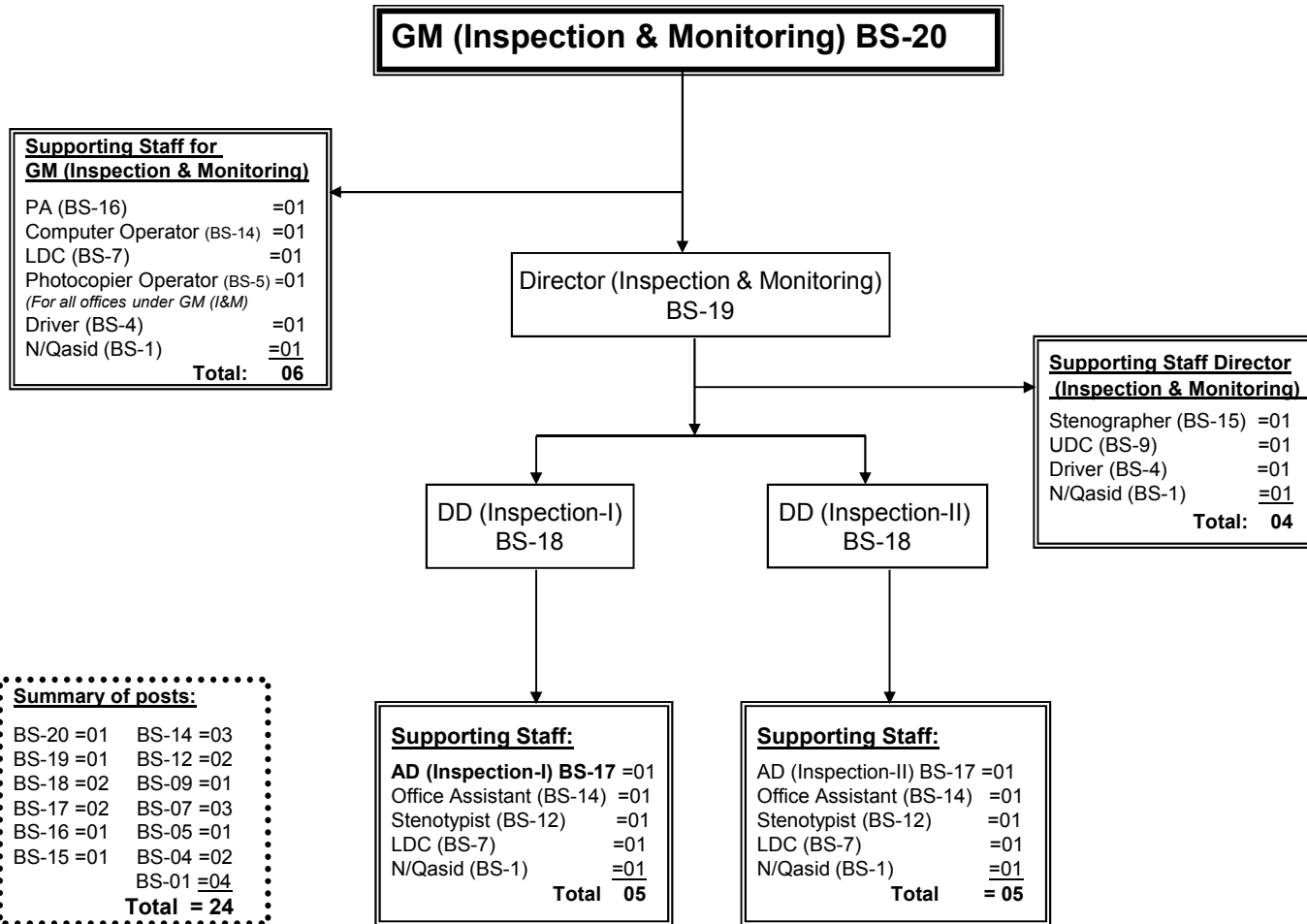
**NATIONAL HIGHWAY AUTHORITY**

**Organization chart of the office of GM (Internal Audit) under Chairman NHA**



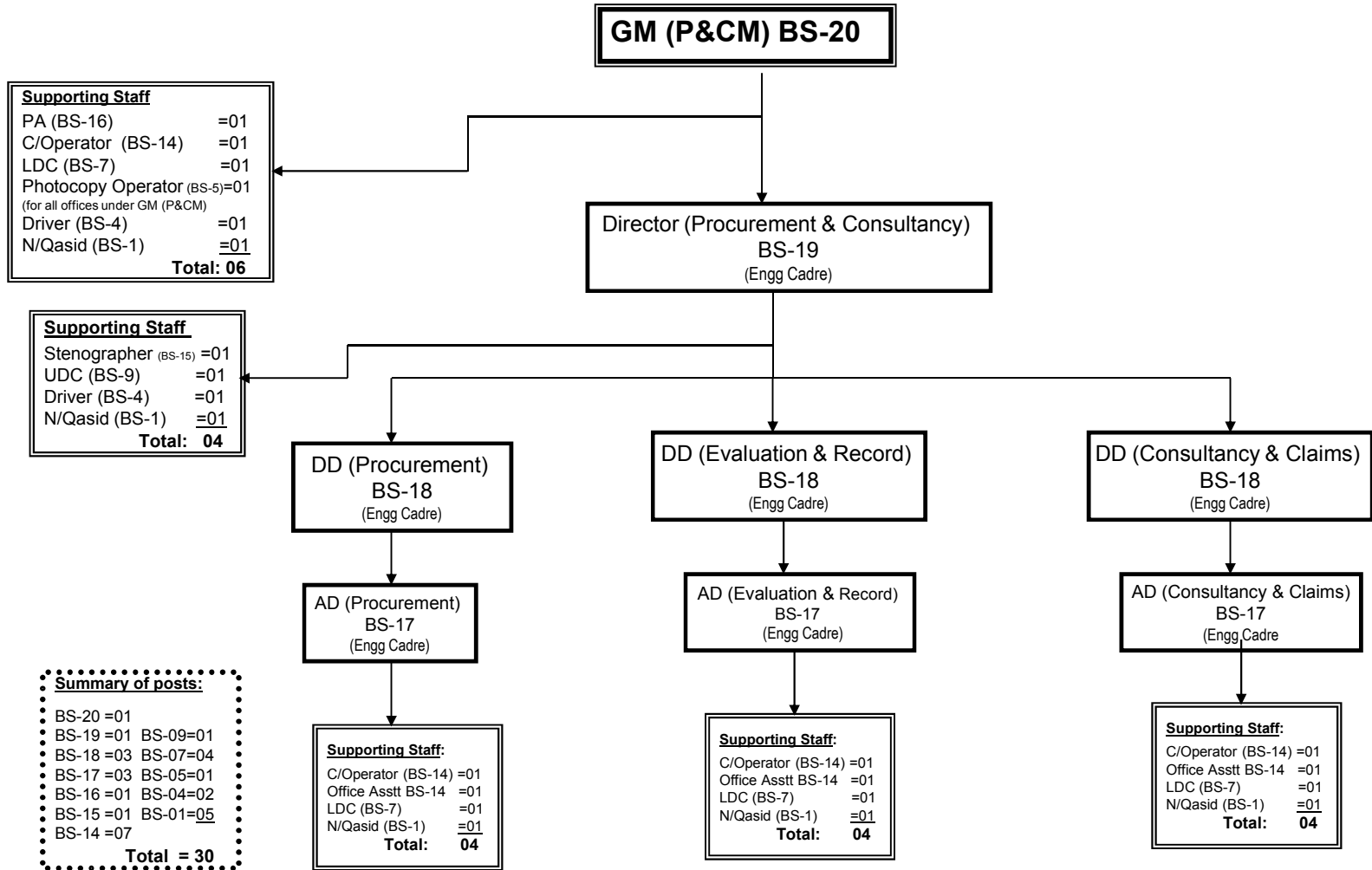
**NATIONAL HIGHWAY AUTHORITY**

**Organization chart of the office of GM (Inspection & Monitoring (BS-20) under Chairman NHA**



**NATIONAL HIGHWAY AUTHORITY**

**Organization chart of the office of GM (P&CM) BS-20 under Member (Ops) NHA**



**Supporting Staff**  
 PA (BS-16) =01  
 C/Operator (BS-14) =01  
 LDC (BS-7) =01  
 Photocopy Operator (BS-5)=01  
 (for all offices under GM (P&CM))  
 Driver (BS-4) =01  
 N/Qasid (BS-1) =01  
**Total: 06**

**Supporting Staff**  
 Stenographer (BS-15) =01  
 UDC (BS-9) =01  
 Driver (BS-4) =01  
 N/Qasid (BS-1) =01  
**Total: 04**

**Summary of posts:**  
 BS-20 =01  
 BS-19 =01 BS-09=01  
 BS-18 =03 BS-07=04  
 BS-17 =03 BS-05=01  
 BS-16 =01 BS-04=02  
 BS-15 =01 BS-01=05  
 BS-14 =07  
**Total = 30**

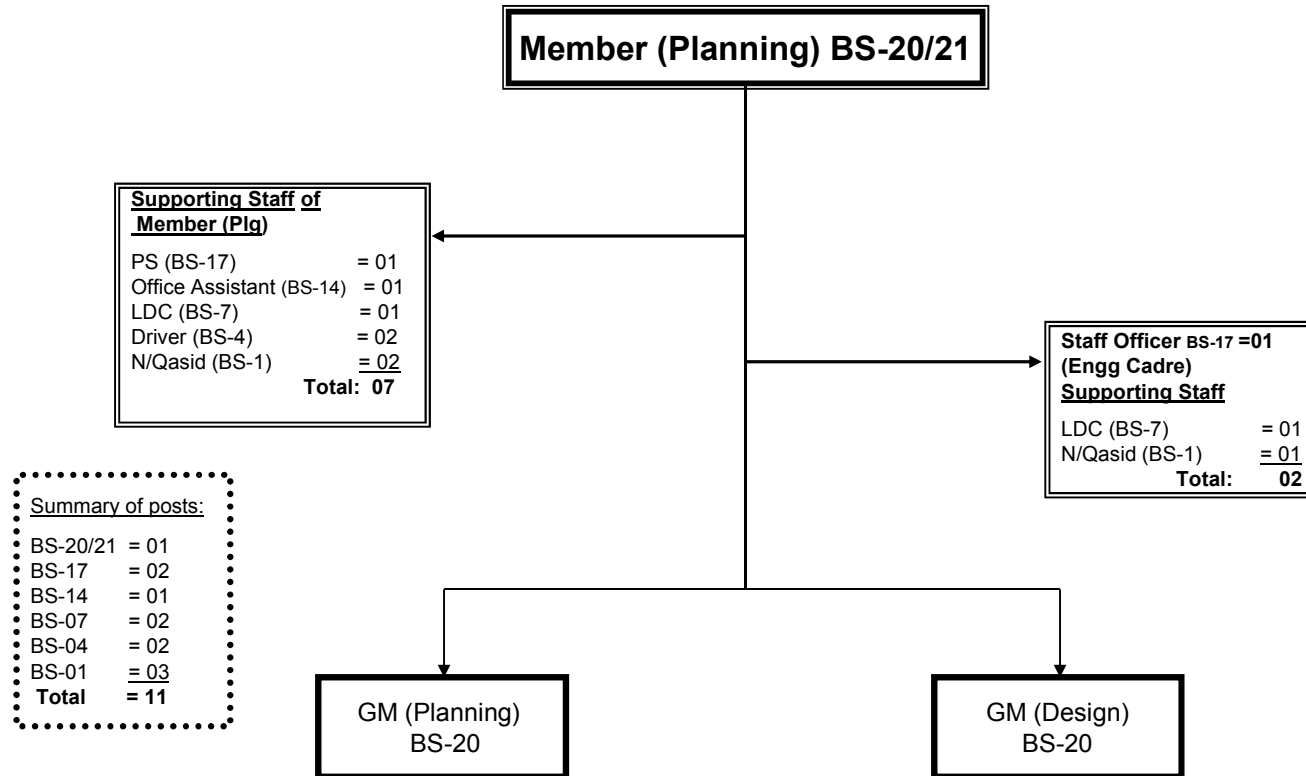
**Supporting Staff:**  
 C/Operator (BS-14) =01  
 Office Asstt BS-14 =01  
 LDC (BS-7) =01  
 N/Qasid (BS-1) =01  
**Total: 04**

**Supporting Staff:**  
 C/Operator (BS-14) =01  
 Office Asstt BS-14 =01  
 LDC (BS-7) =01  
 N/Qasid (BS-1) =01  
**Total: 04**

**Supporting Staff:**  
 C/Operator (BS-14) =01  
 Office Asstt BS-14 =01  
 LDC (BS-7) =01  
 N/Qasid (BS-1) =01  
**Total: 04**

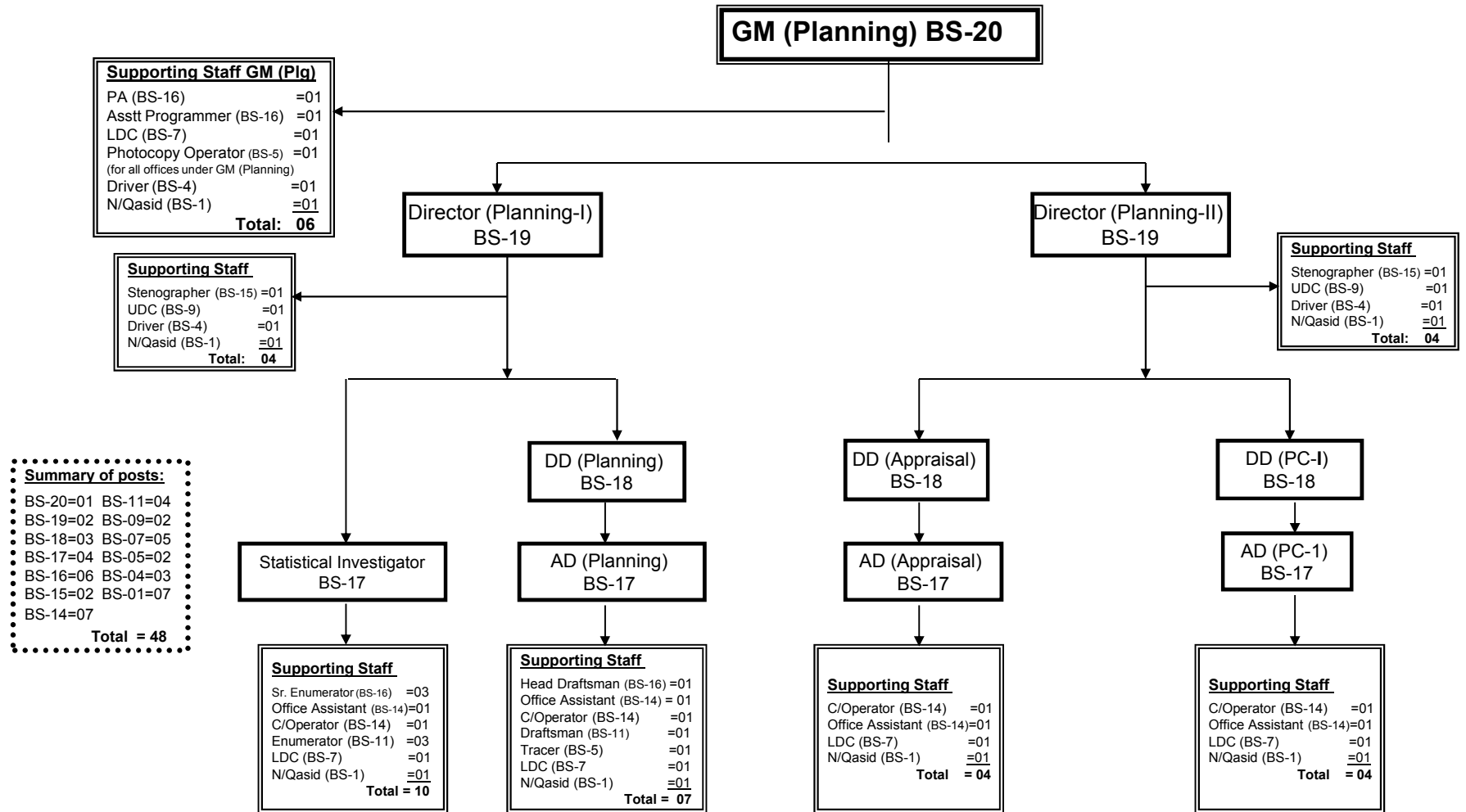
**NATIONAL HIGHWAY AUTHORITY**

**Organization chart of the office of Member (Planning) BS-20/21 under Chairman, NHA**



**NATIONAL HIGHWAY AUTHORITY**

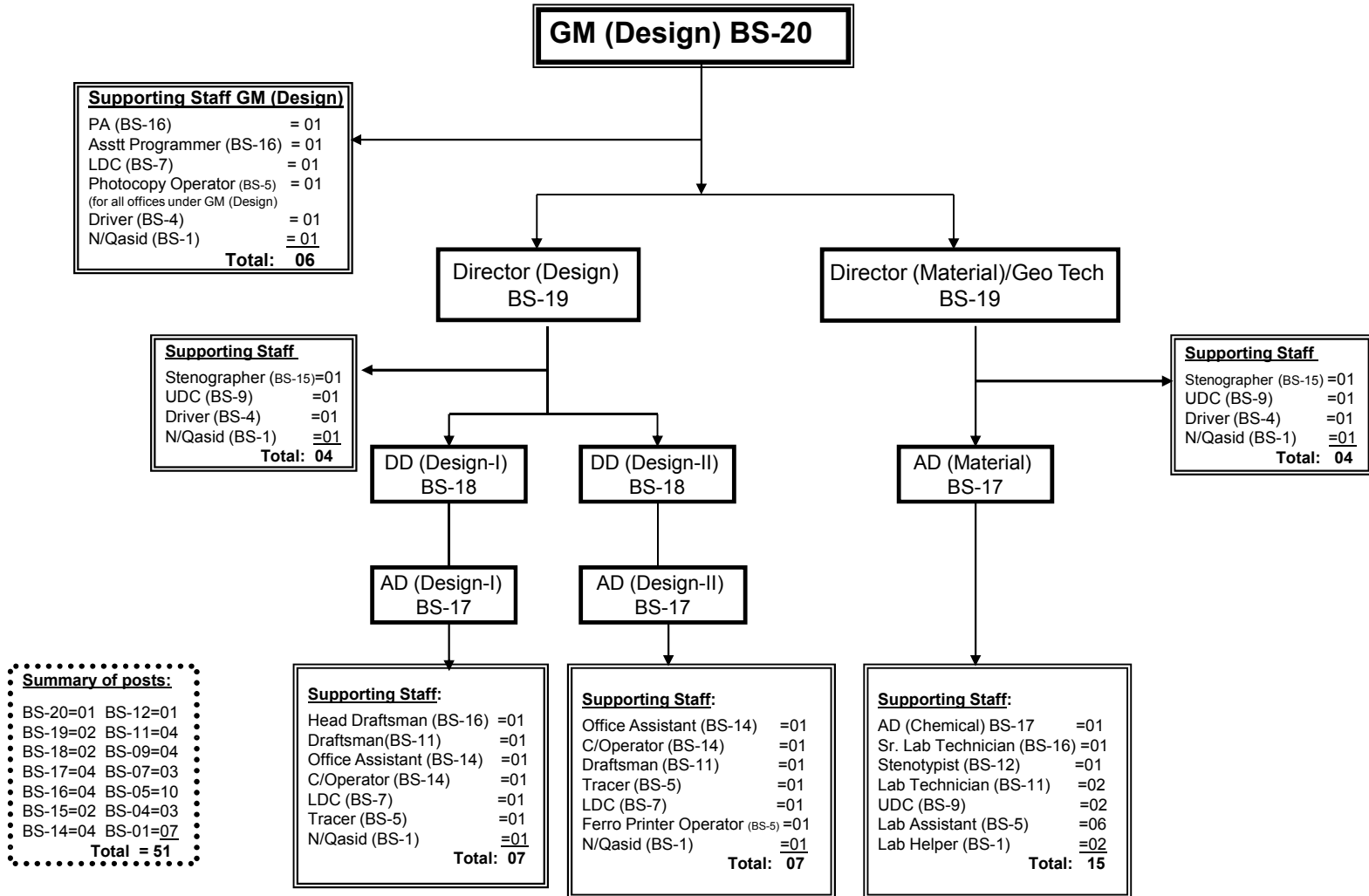
**Organization chart of the office of GM (Planning) BS-20 under Member (Planning)**





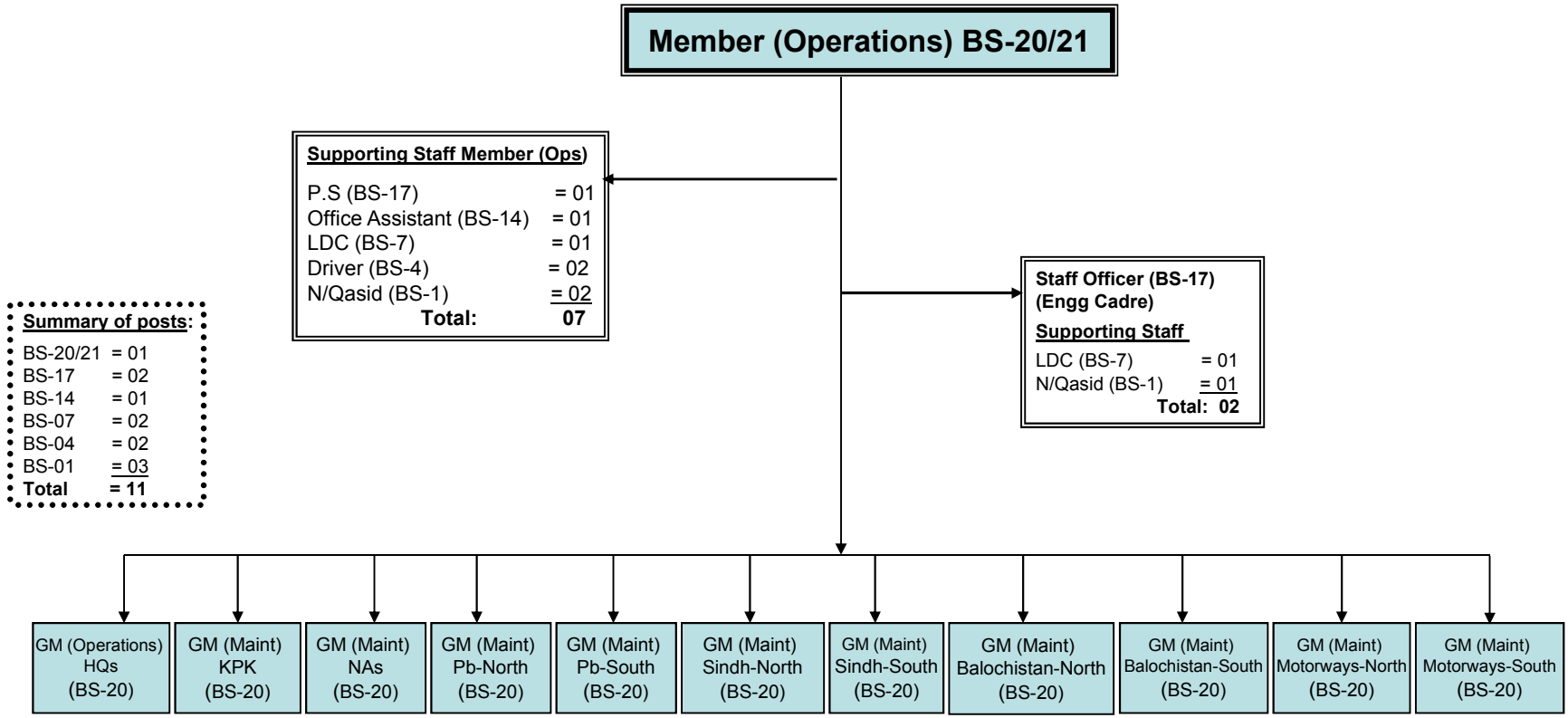
**NATIONAL HIGHWAY AUTHORITY**

**Organization chart of the office of GM (Design) BS-20 under Member (Planning)**



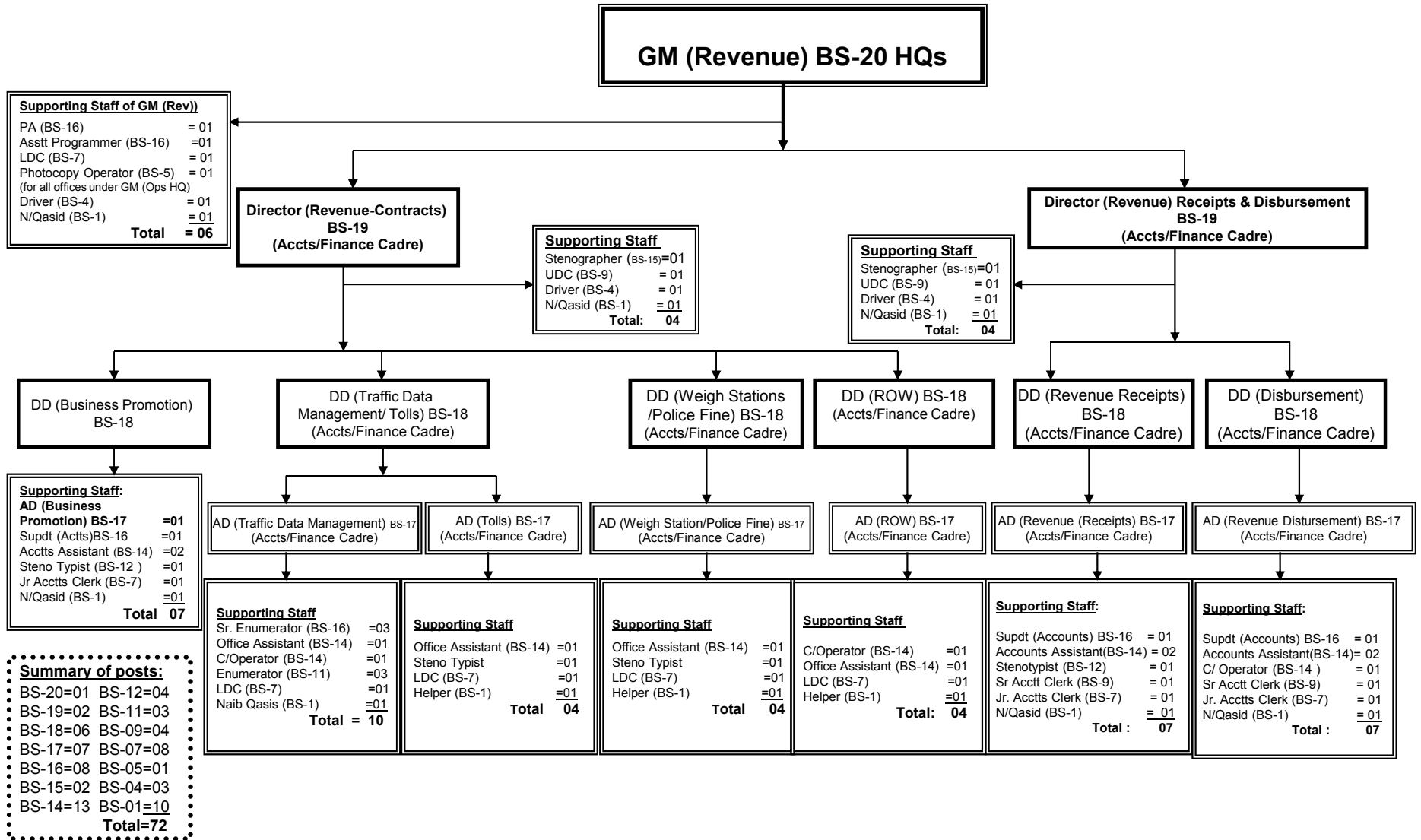
**NATIONAL HIGHWAY AUTHORITY**

**Organization chart of the office of Member (Operations) BS-20/21 under Chairman NHA**



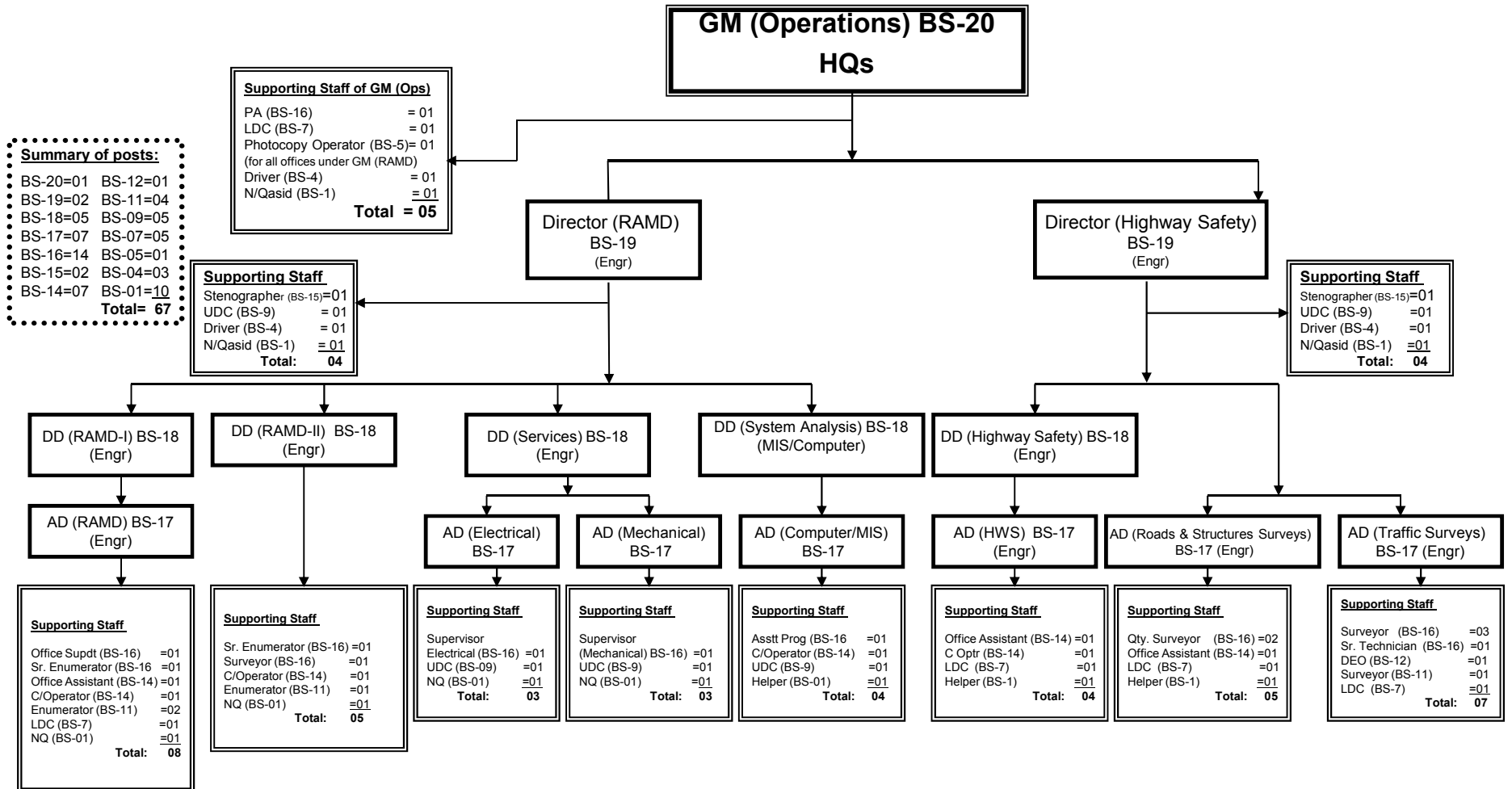
## NATIONAL HIGHWAY AUTHORITY

### Organization chart of the office of GM (Revenue) NHA HQs BS-20 under Member (Finance)



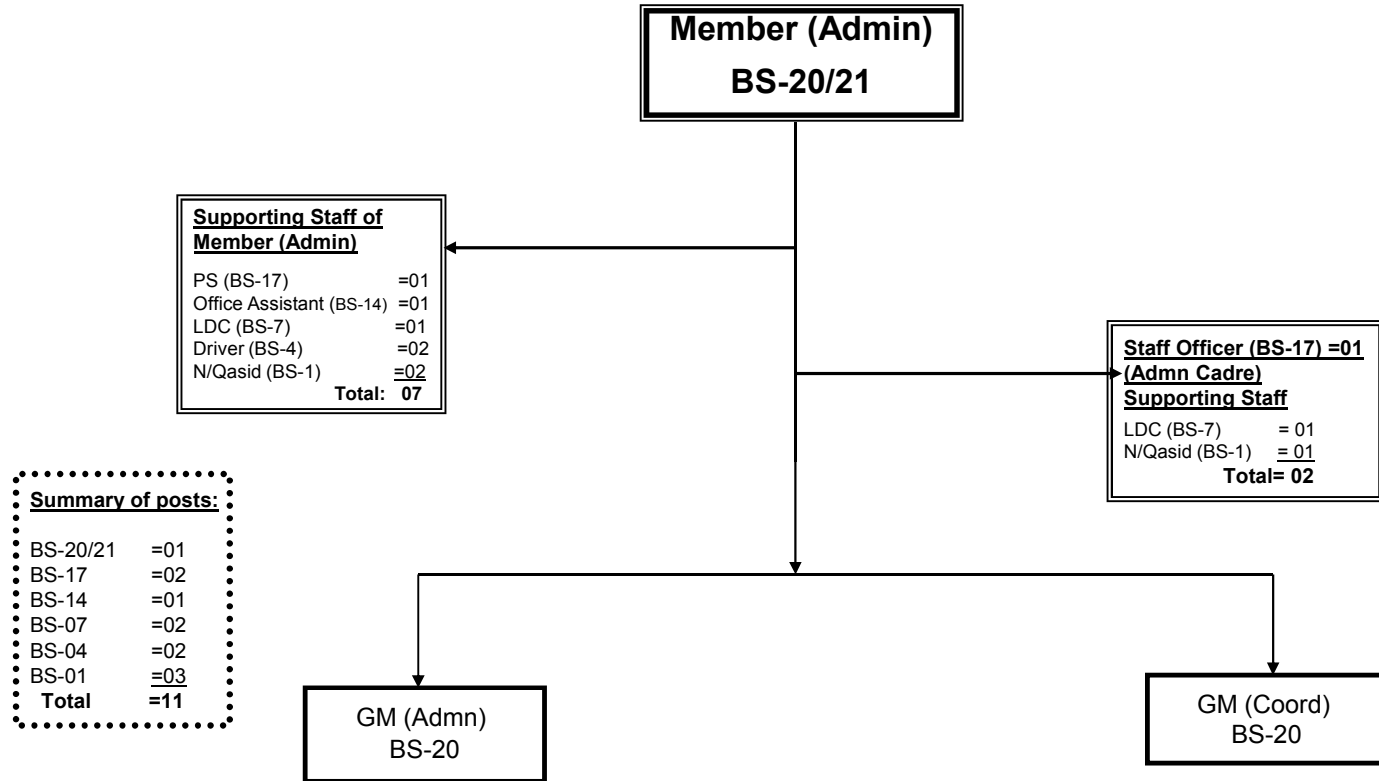
## NATIONAL HIGHWAY AUTHORITY

### Organization chart of the office of GM (Operations) NHA HQs BS-20 under Member (Operations)



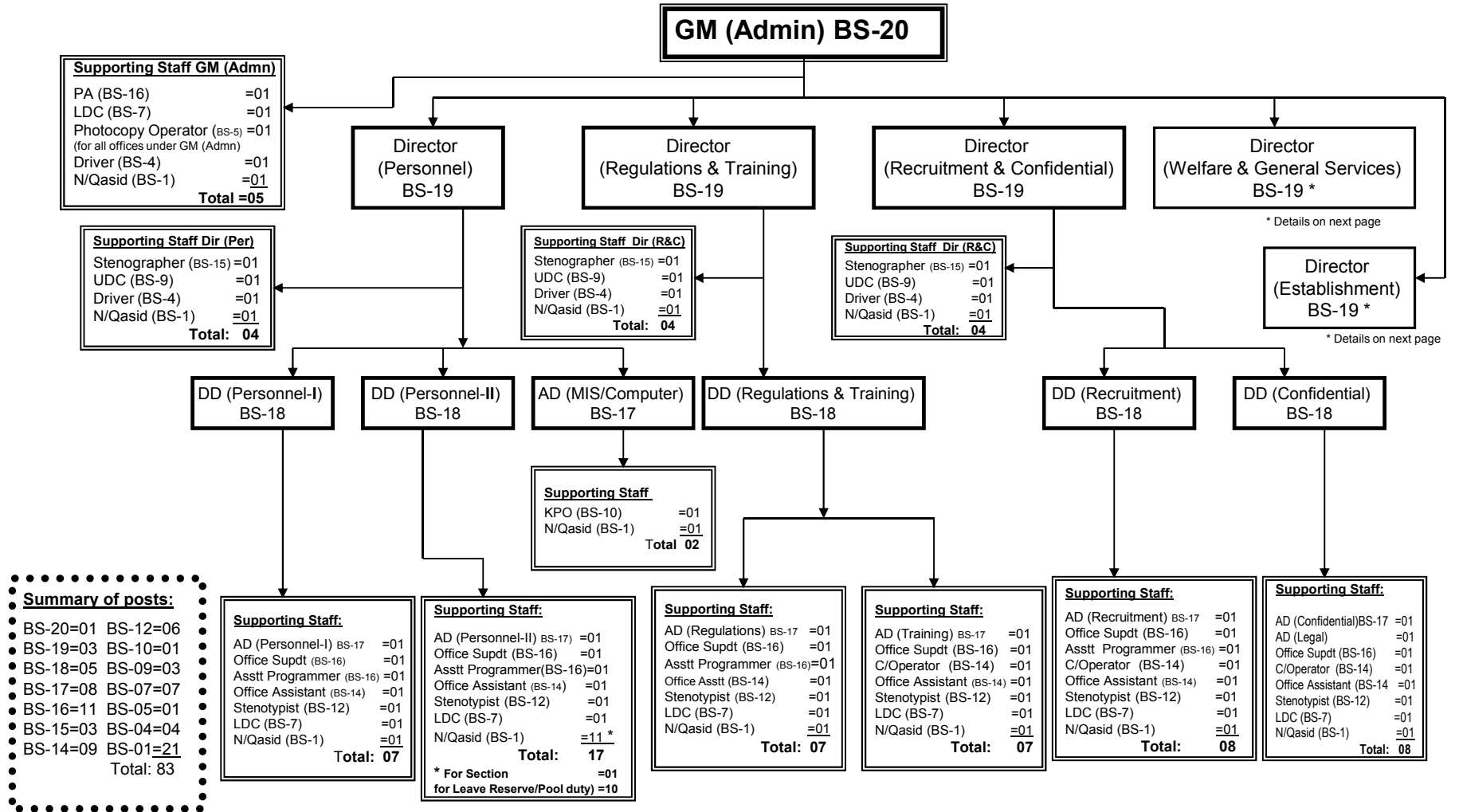
**NATIONAL HIGHWAY AUTHORITY**

**Organization chart of the office of Member (Admn) BS-20/21 under Chairman NHA**



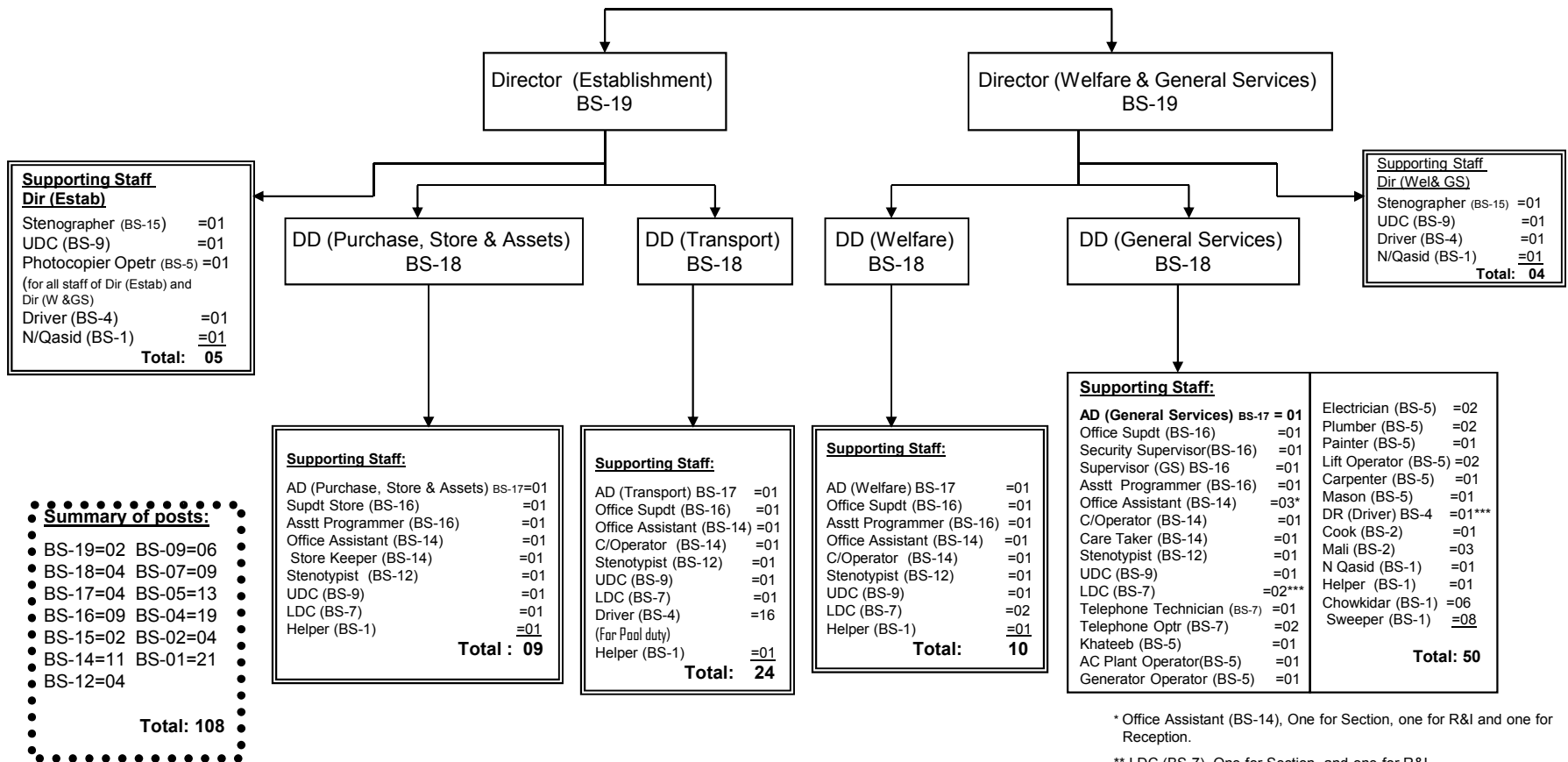
# NATIONAL HIGHWAY AUTHORITY

## Organization chart of the office of GM (Admin) BS-20 under Member (Admn) NHA



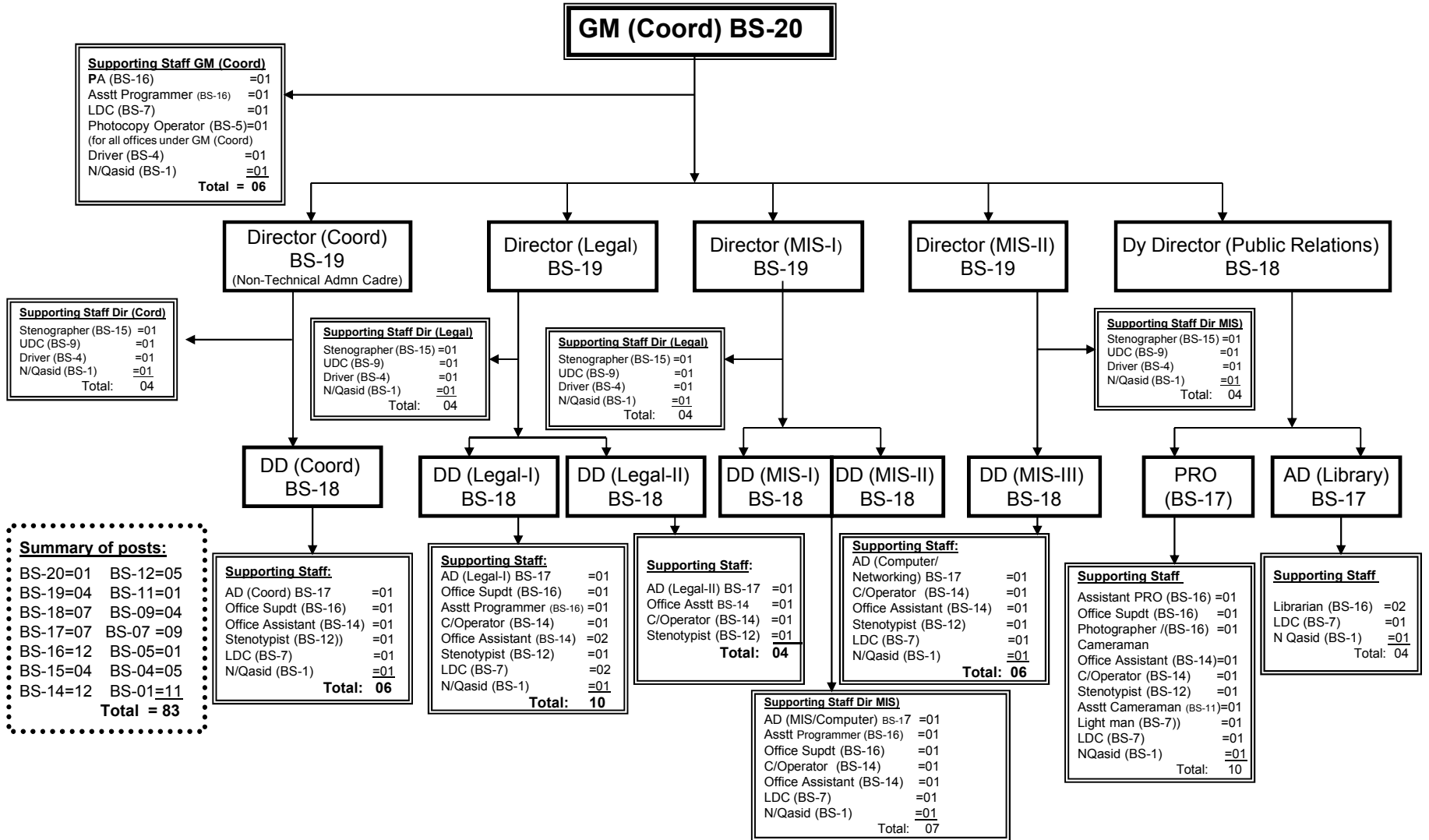
- Summary of posts:**
- BS-20=01 BS-12=06
  - BS-19=03 BS-10=01
  - BS-18=05 BS-09=03
  - BS-17=08 BS-07=07
  - BS-16=11 BS-05=01
  - BS-15=03 BS-04=04
  - BS-14=09 BS-01=21
  - Total: 83

**NATIONAL HIGHWAY AUTHORITY**  
**Organization chart of Establishment Wing (HQ) under GM (Admn) NHA**



# NATIONAL HIGHWAY AUTHORITY

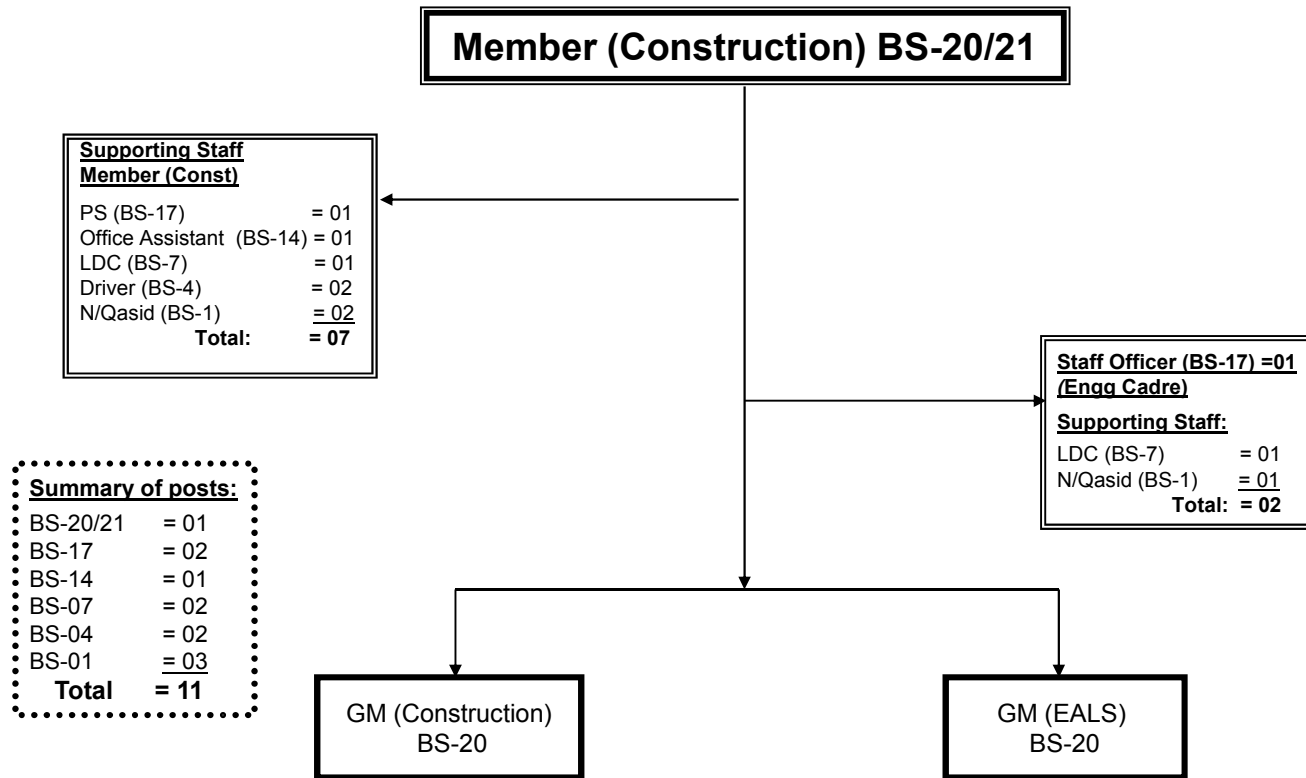
## Organization chart of the office of GM (Coord) BS-20 under Member (Admn) NHA





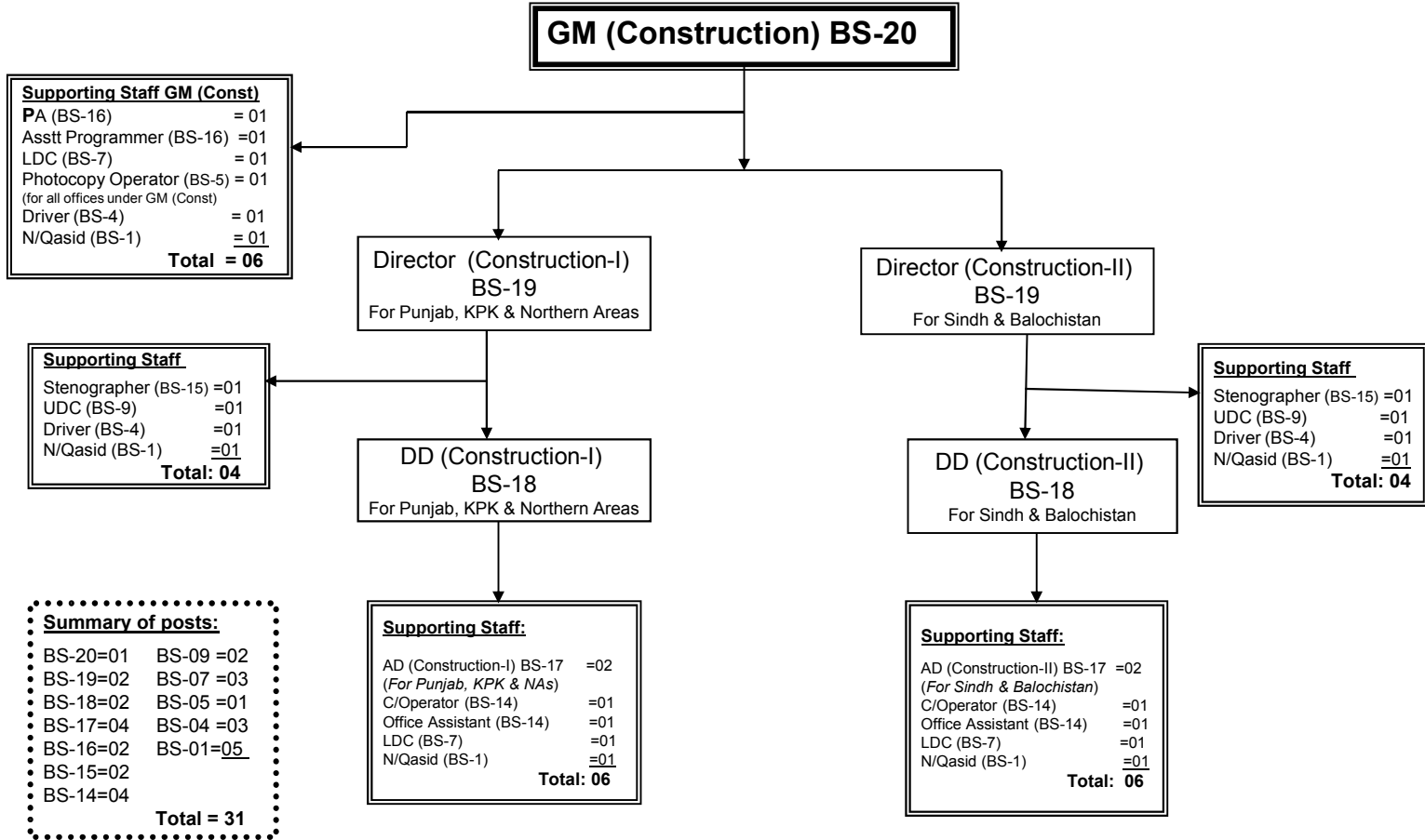
**NATIONAL HIGHWAY AUTHORITY**

**Organization chart of the office of Member (Construction) BS-20/21 under Chairman NHA**



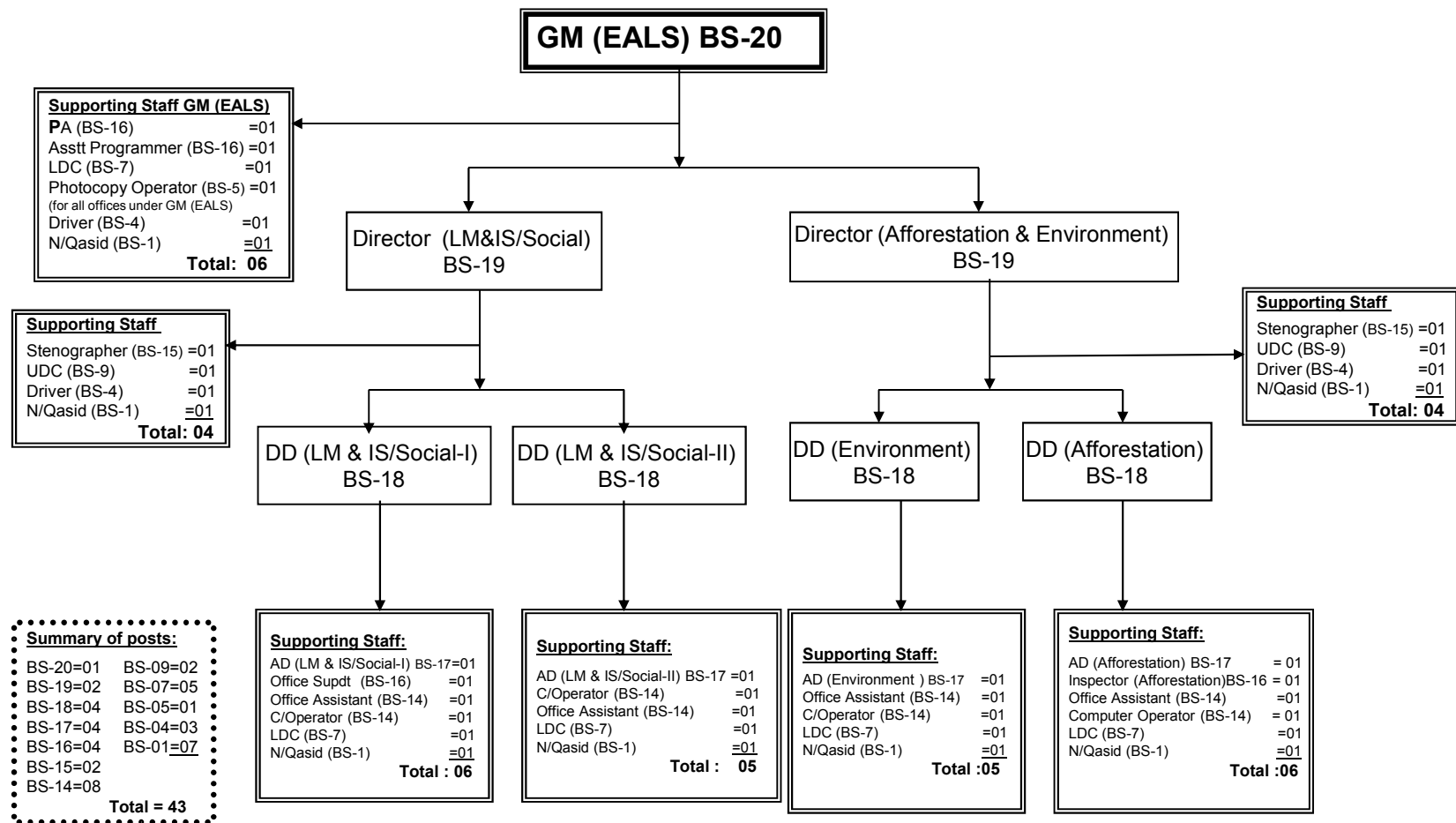
## NATIONAL HIGHWAY AUTHORITY

### Organization chart of the office of GM (Construction) BS-20 under Member (Construction) NHA



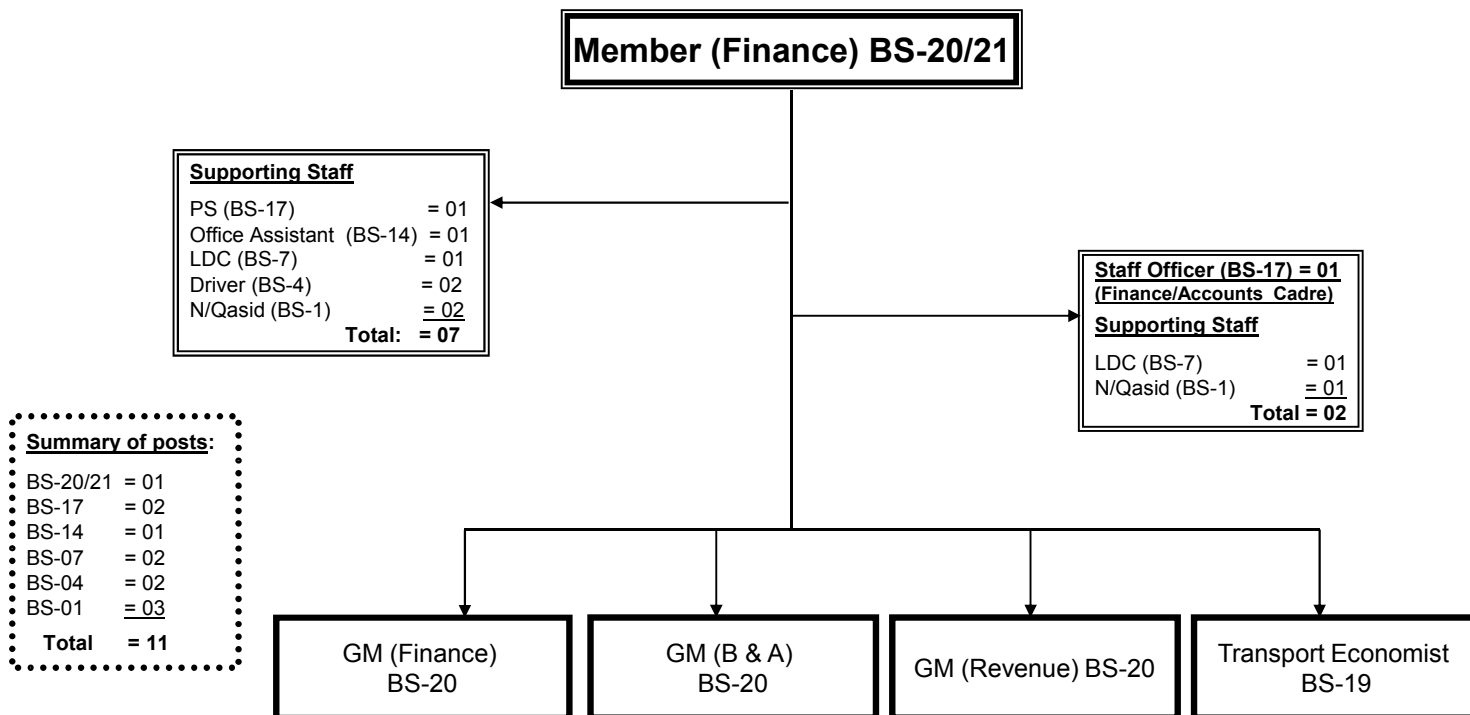
## NATIONAL HIGHWAY AUTHORITY

### Organization chart of the office of GM (EALS) BS-20 under Member (Construction)



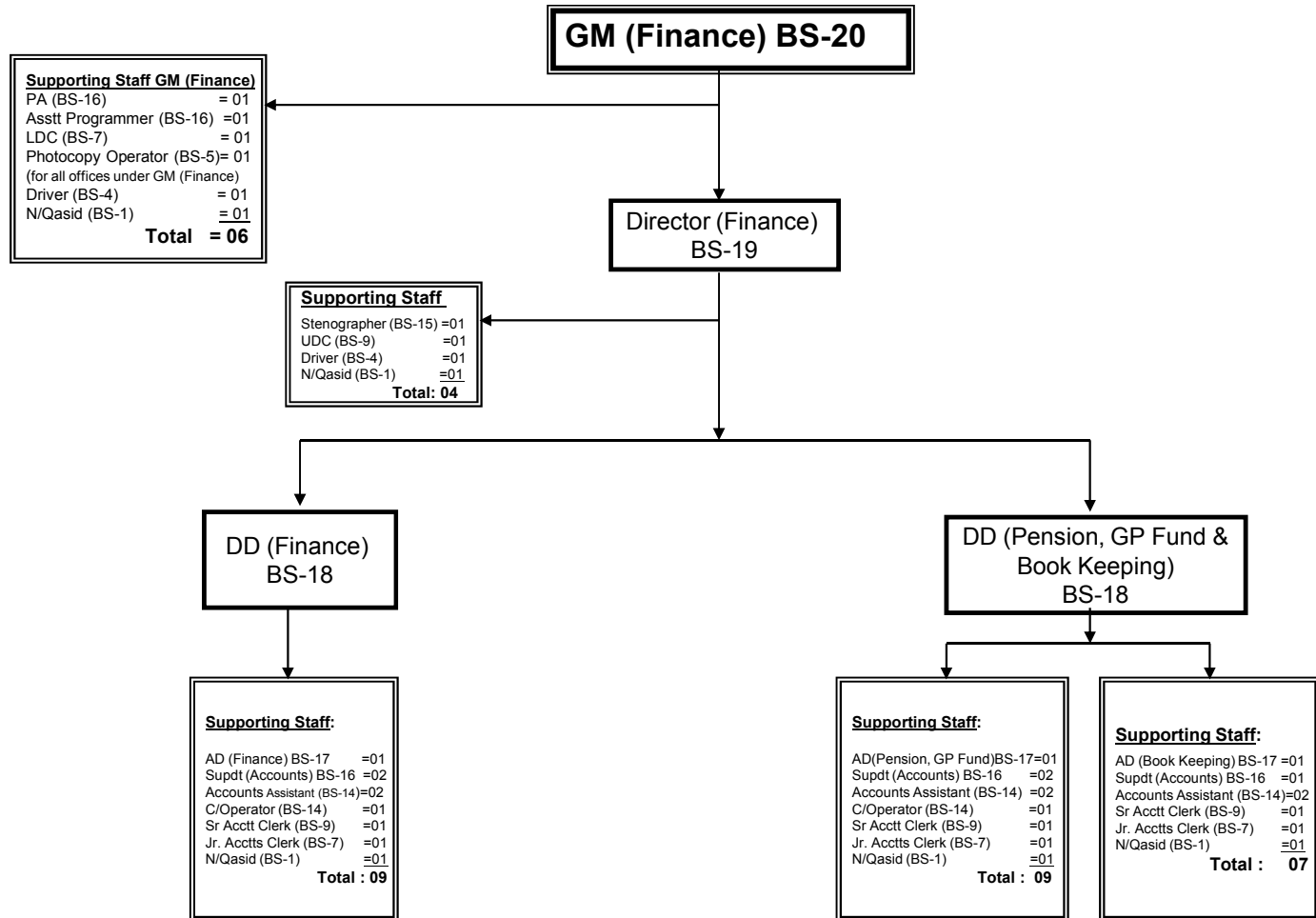
**NATIONAL HIGHWAY AUTHORITY**

**Organization chart of the office of Member (Finance) BS-20/21 under Chairman NHA**



**NATIONAL HIGHWAY AUTHORITY**

**Organization chart of the office of GM (Finance) BS-20 under Member (Finance) NHA**



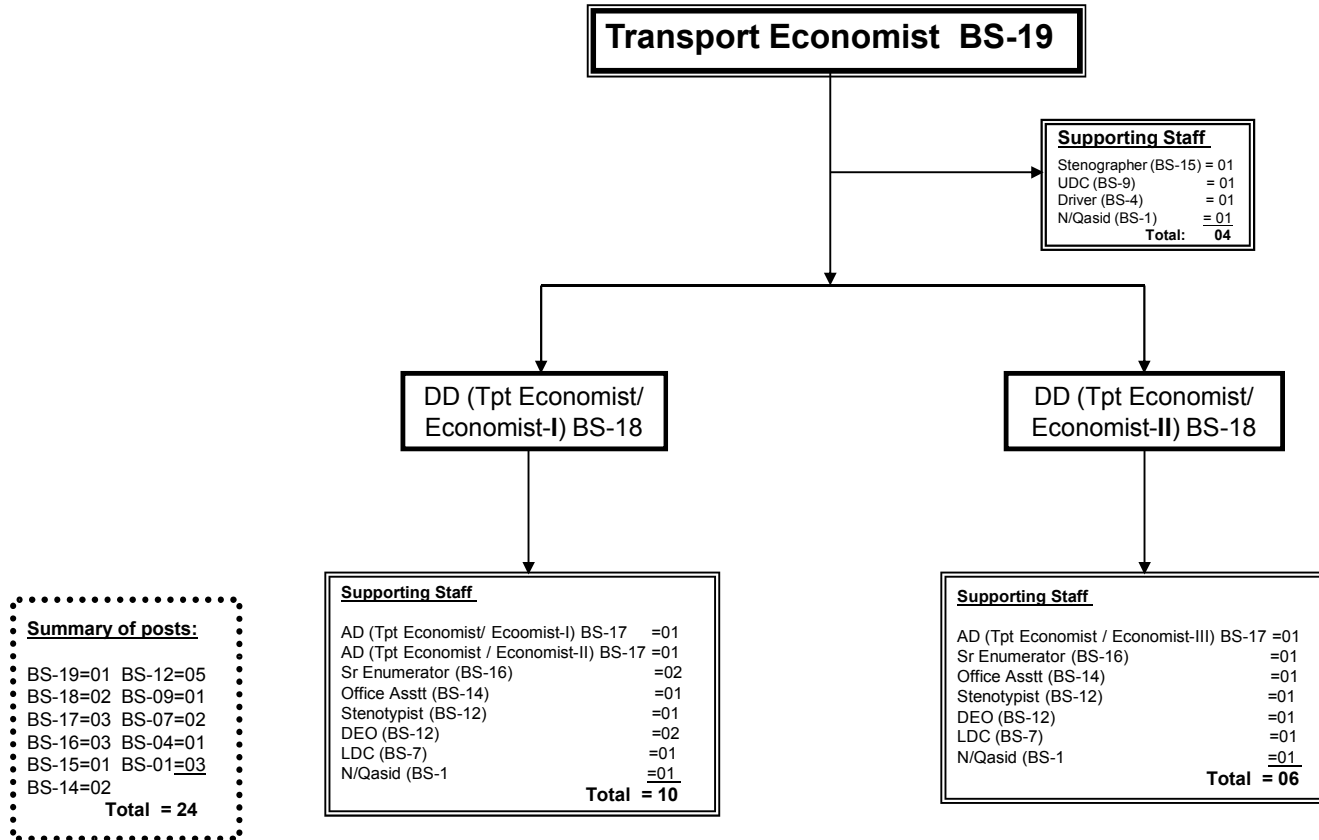
**Summary of posts:**

BS-20=01	BS-14=08
BS-19=01	BS-09=04
BS-18=02	BS-07=04
BS-17=03	BS-05=01
BS-16=07	BS-04=02
BS-15=01	BS-01=05

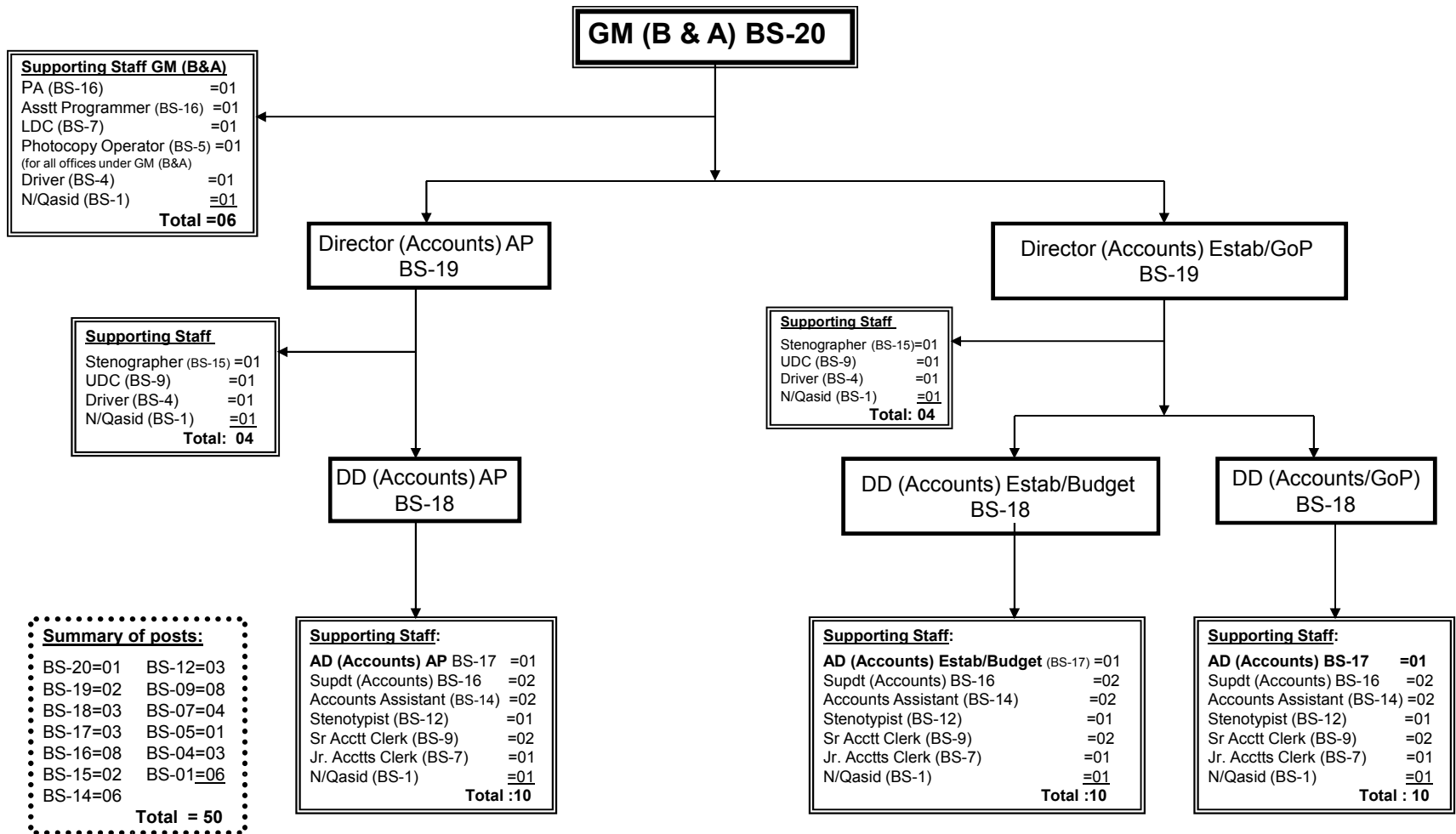
**Total = 39**

**NATIONAL HIGHWAY AUTHORITY**

**Organization chart of the office of Transport Economist (BS-19) under Member (Finance) NHA**

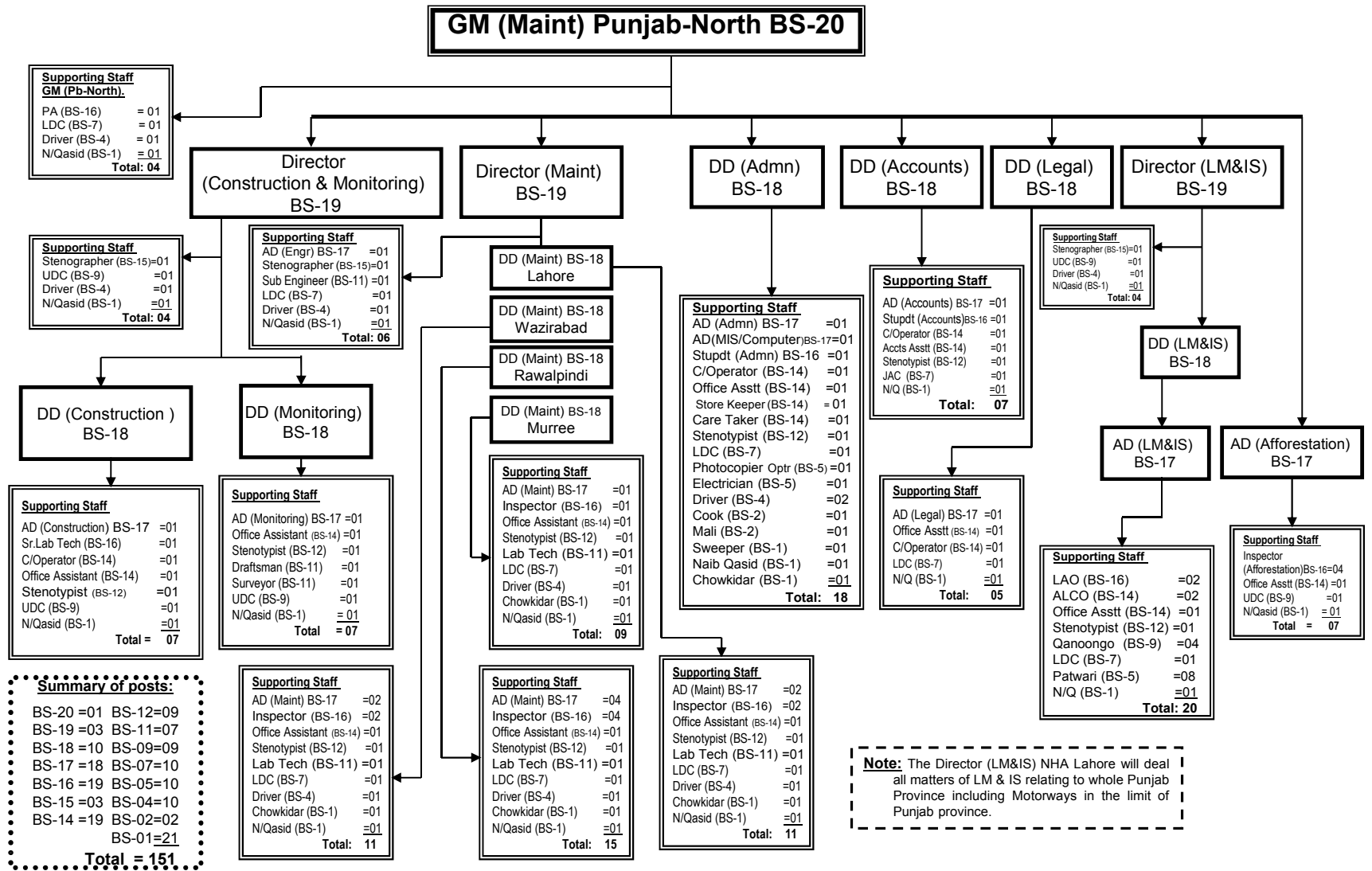


**NATIONAL HIGHWAY AUTHORITY**  
**Organization chart of the office of GM (B & A) BS-20 under Member(Finance) NHA**



# NATIONAL HIGHWAY AUTHORITY

## Organization chart of the office of GM (Punjab-North) BS-20 Lahore under Member (Operations NHA)

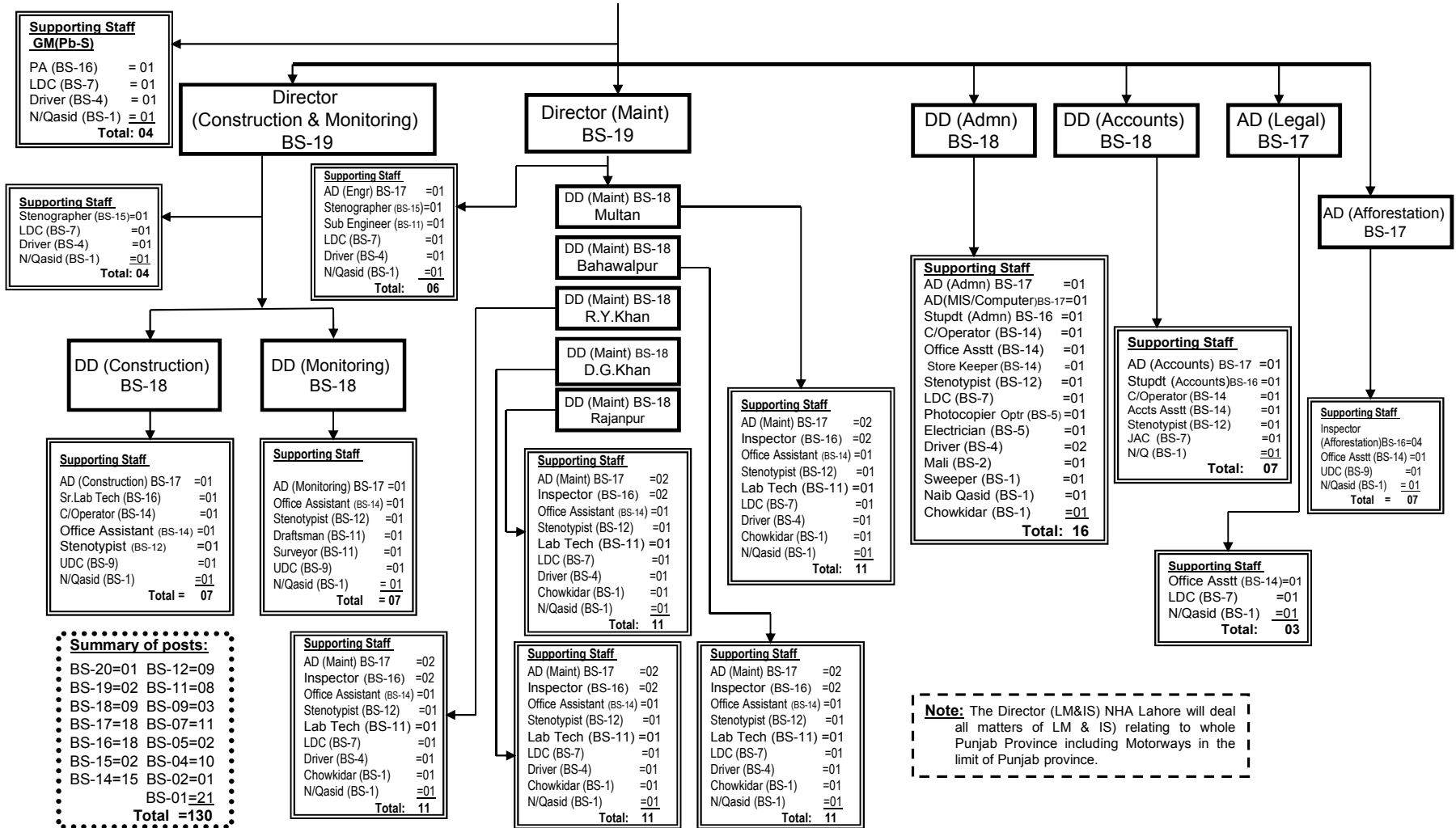




# NATIONAL HIGHWAY AUTHORITY

## Organization chart of the office of GM (Maint) BS-20 Punjab-South Multan under Member (Operations)

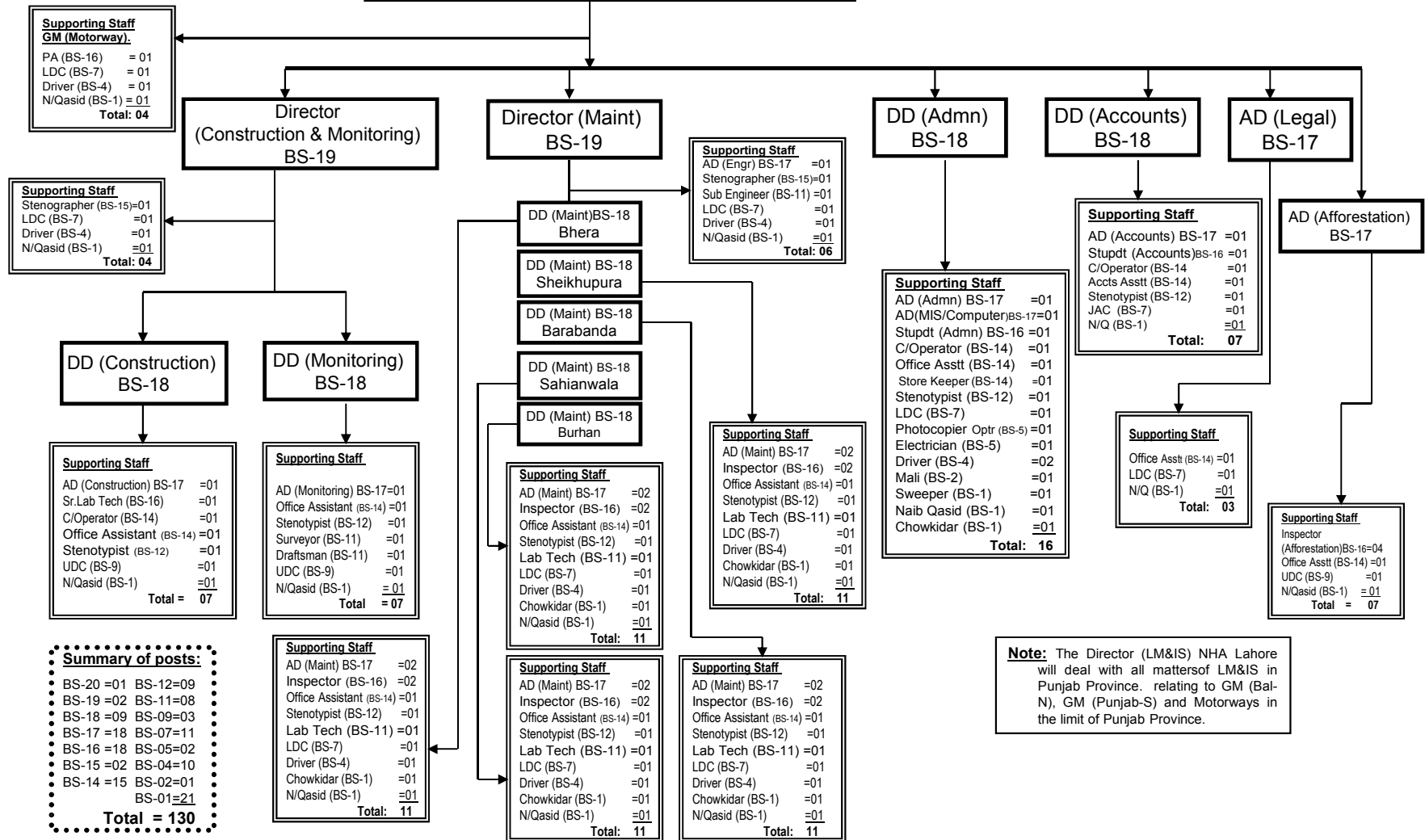
### GM (Maint) Punjab-South BS-20



# NATIONAL HIGHWAY AUTHORITY

## Organization chart of the office of GM (Motorway-North) BS-20 Balkasar under Member (Operations) NHA

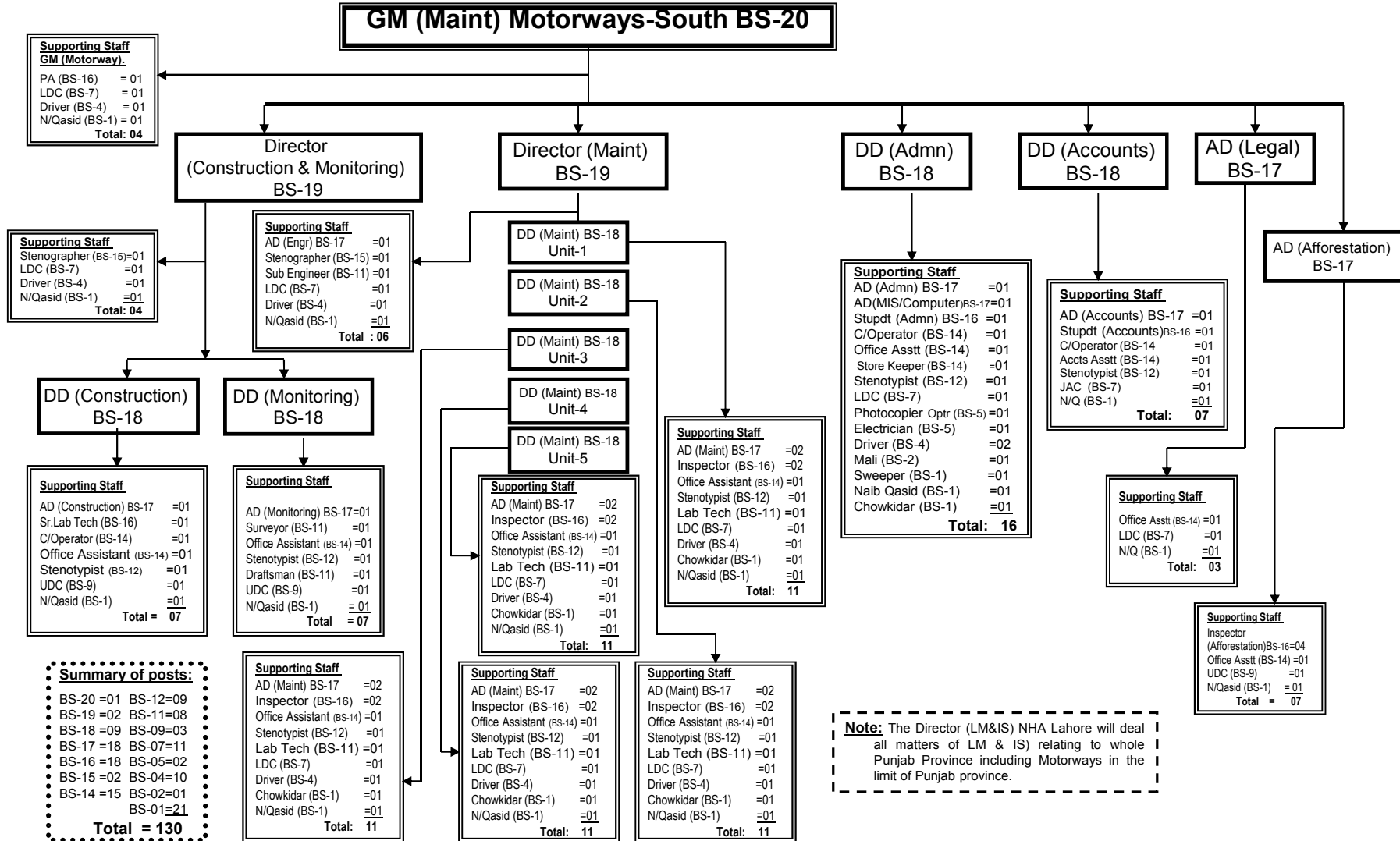
### GM (Maint) Motorways North BS-20



**Note:** The Director (LM&IS) NHA Lahore will deal with all matters of LM&IS in Punjab Province, relating to GM (Bal-N), GM (Punjab-S) and Motorways in the limit of Punjab Province.

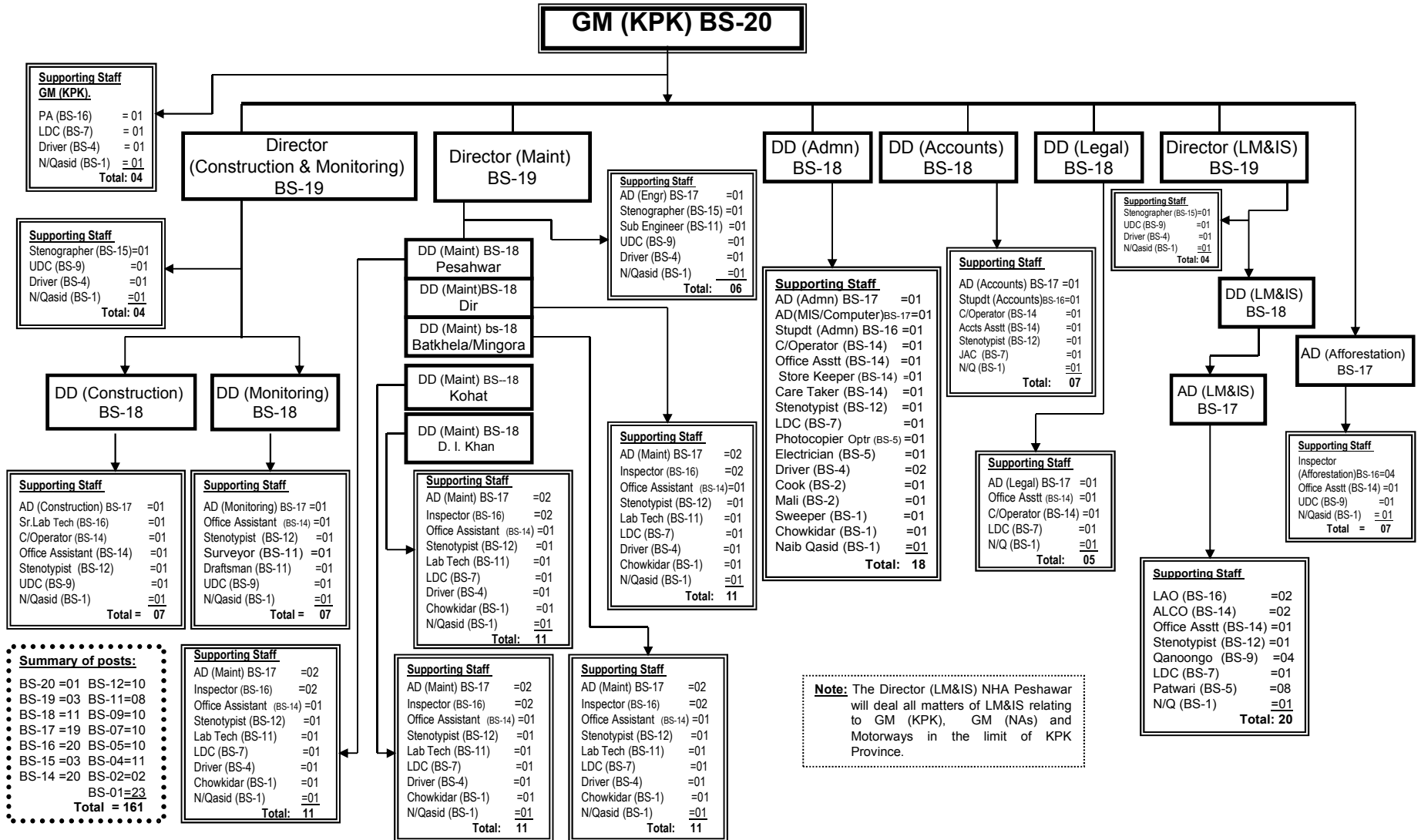
# NATIONAL HIGHWAY AUTHORITY

## Organization chart of the office of GM (Motorway-South) BS-20 under Member (Operations) NHA



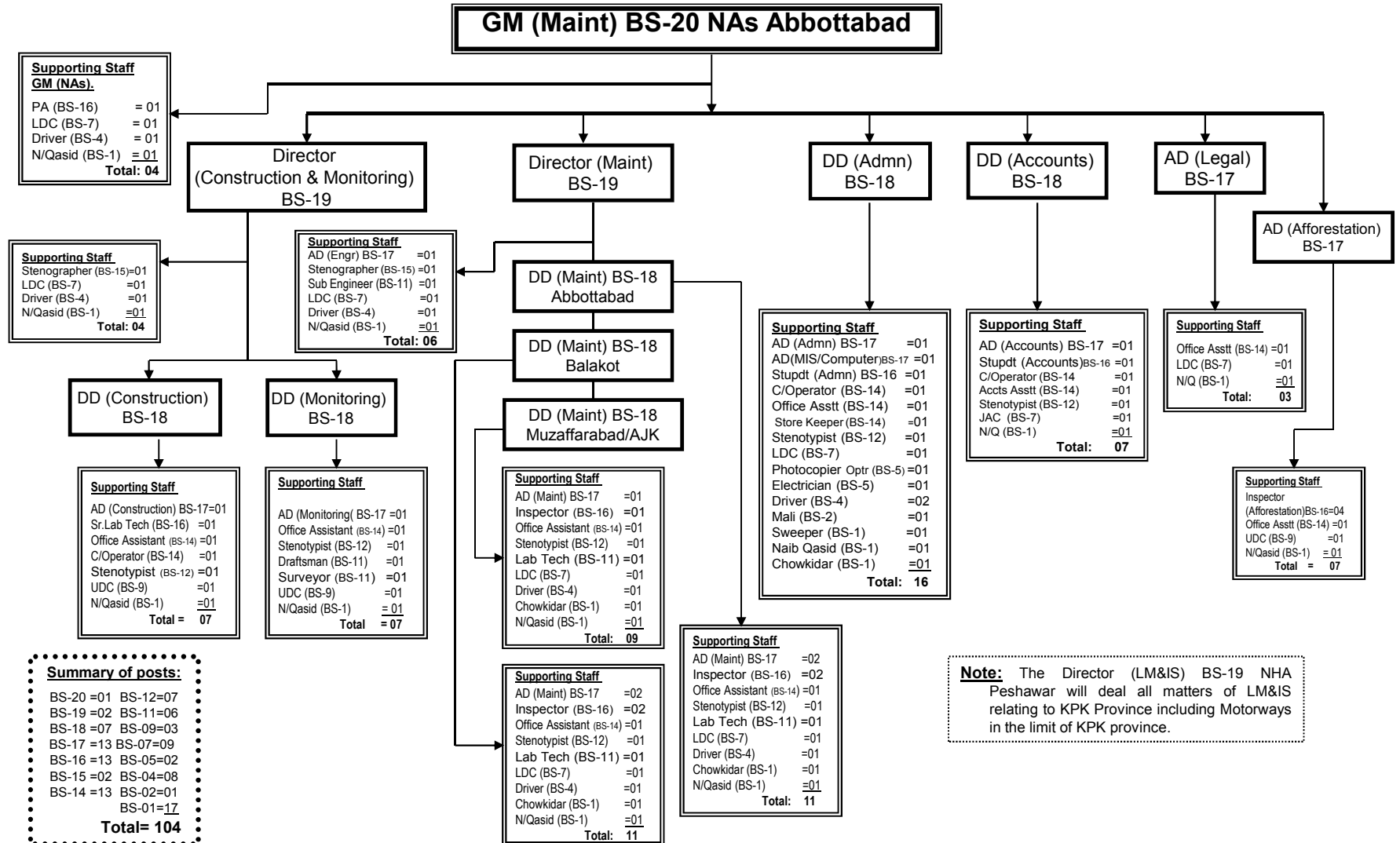
# NATIONAL HIGHWAY AUTHORITY

## Organization chart of the office of GM (Maint) KPK BS-20 Peshawar under Member (Operations)



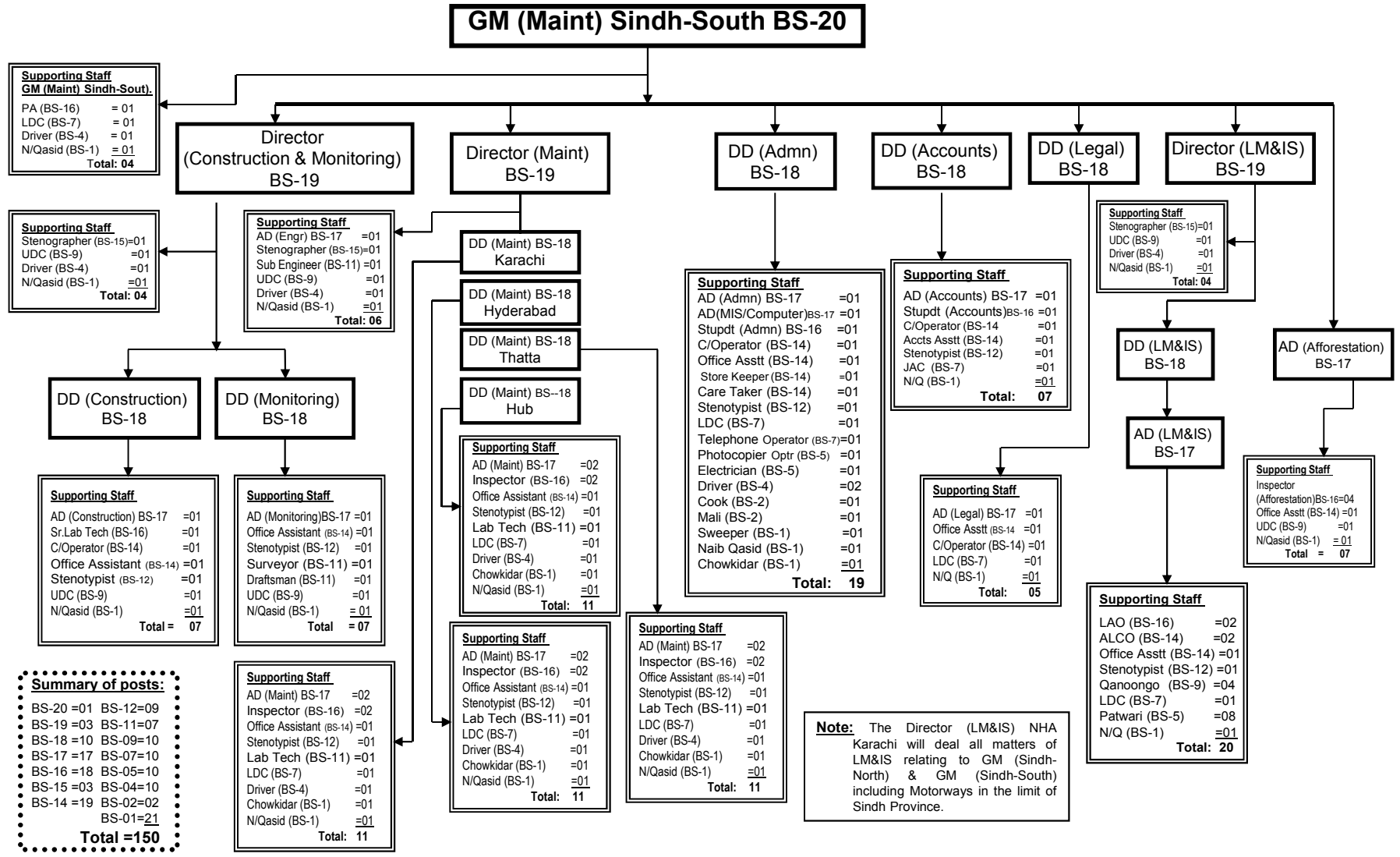
## NATIONAL HIGHWAY AUTHORITY

### Organization chart of the office of GM (Maint) BS-20 Abbottabad under Member (Operations)



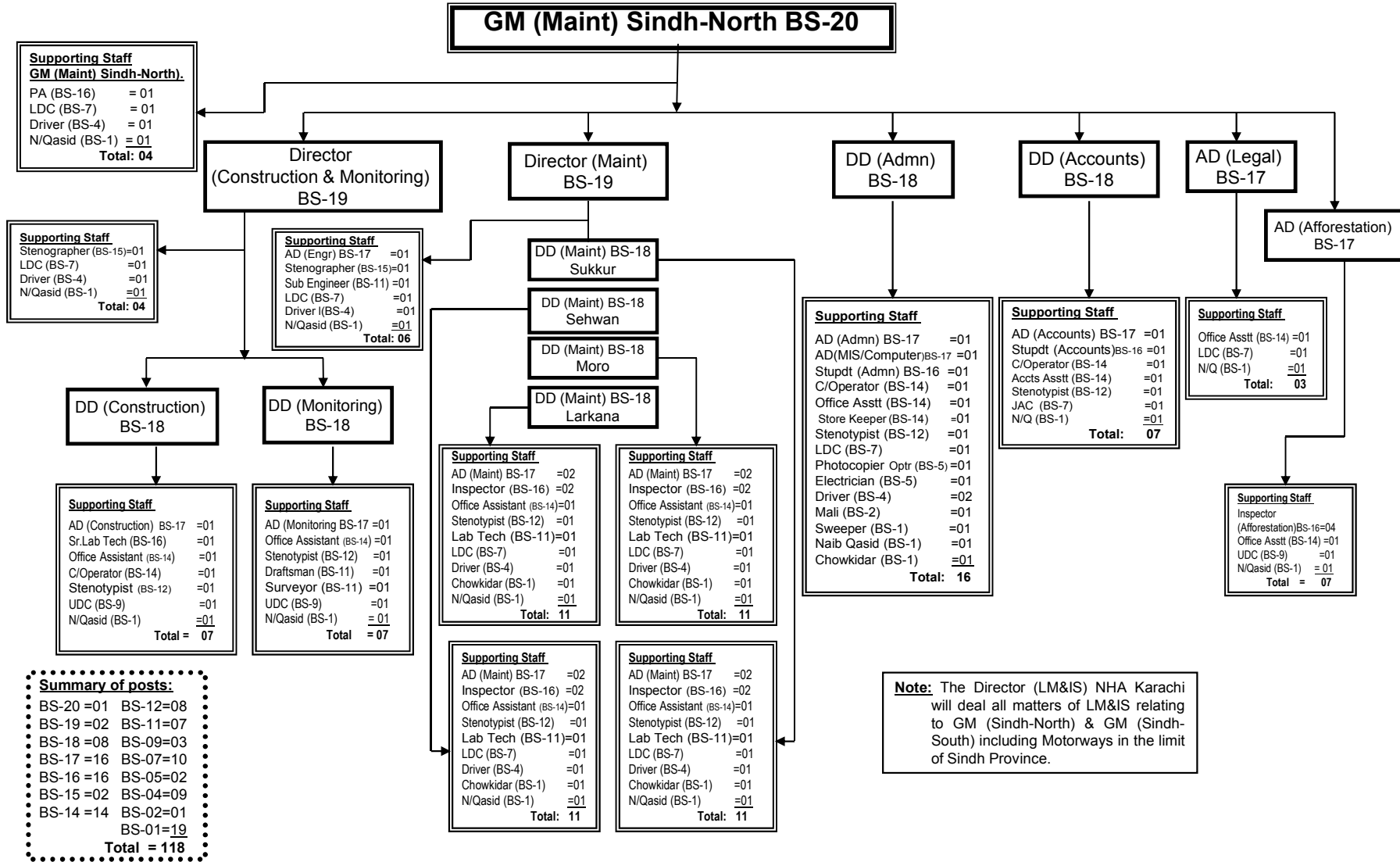
# NATIONAL HIGHWAY AUTHORITY

## Organization chart of the office of GM (Maint) Sindh-South BS-20 Karachi Under Member (Operations) NHA



# NATIONAL HIGHWAY AUTHORITY

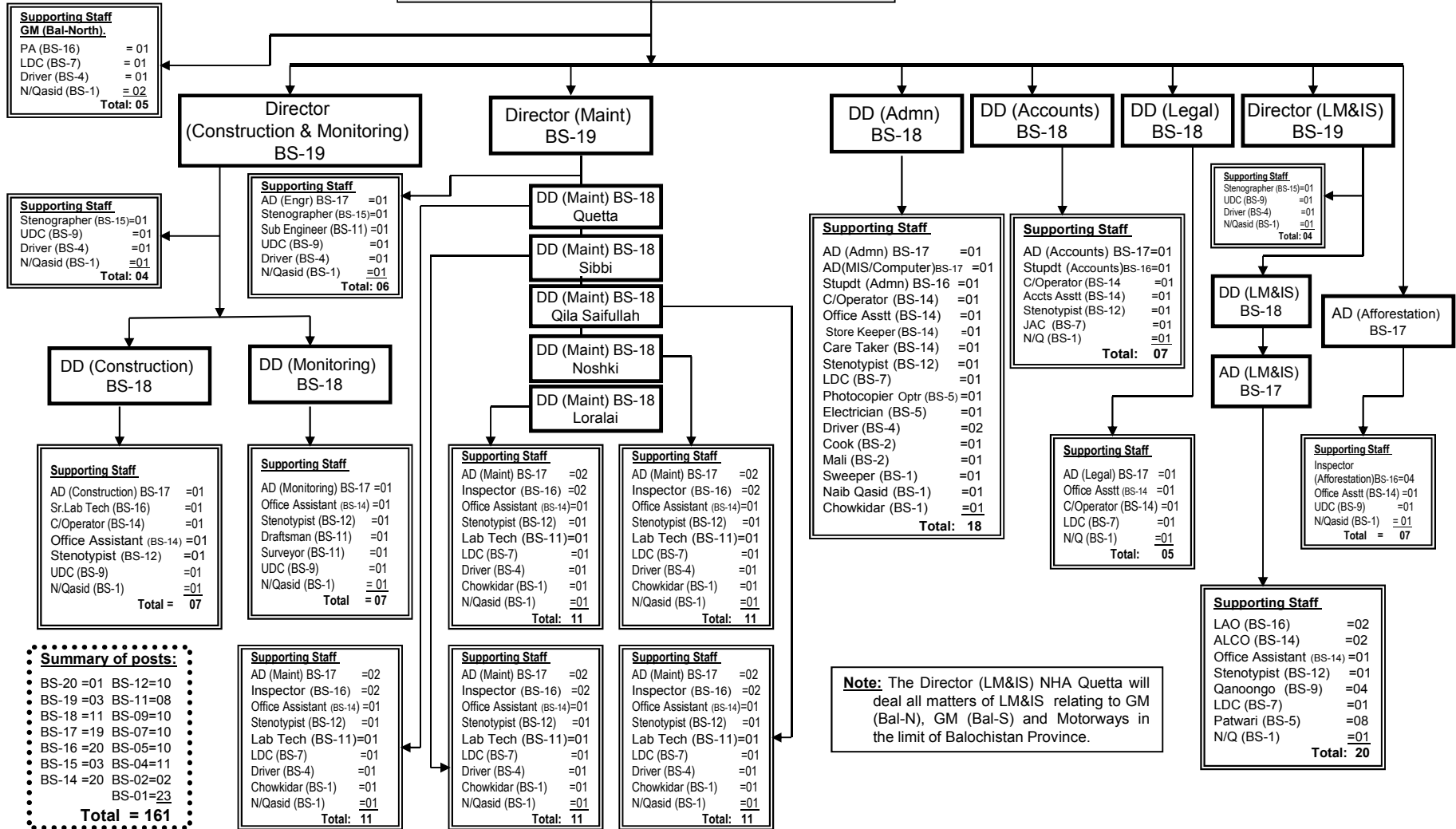
## Organization chart of the office of GM (Maint) Sindh-North BS-20 Sukkur



# NATIONAL HIGHWAY AUTHORITY

Organization chart of the office of GM (Maint) Balochistan-North BS-20 Quetta under Member (Operations) NHA

## GM (Maint) Balochistan-North BS-20





# NATIONAL HIGHWAY AUTHORITY

## Organization chart of the office of GM (Balochistan-South) BS-20 Khuzdar under Member (Operations) NHA

### GM (Maint) Balochistan-South) BS-20

